

## TECHNICAL CARD



LED Street Light



Pursuant to the provisions of the WEEE Act, it is forbidden to put waste equipment marked with the symbol of a crossed out bin together with other waste. The user, wishing to get rid of electronic and electrical equipment, is obliged to return it to a waste equipment collection point. There are no hazardous components in the equipment that have a particularly negative impact on the environment and human health.

# VIDEX®



90×130°



Ra ≥ 80



20 000



IK07



30 000 h



Not Dimmable



-20°C +50°C



Free



IP65

## WARRANTY 3 YEARS

### NEUTRAL WHITE



### 4000K

Neutral White / Neutralny biały / Neutralni bila / Blanc neuter / Neutrálna biela / Neutraal wit / Semleges feher / Nevtalno bela / Neutralno bijela / Neutralweiß / Alb neutru / Neutralus balta / Neitrāls balta / Neutraalne valge / Нейтрално бяла / Bianco neutro.

## General parameters

Light source or containing product	Light source
Control gear replaceable	-
Light source replaceable	no

## Type of light source

Energy class of the light source	E
Dimmable	no
Technology	LED

## Electrical parameters

On-mode power (Pon)	50 W
Rated voltage, frequency	AC 220-240 V, 50/60 Hz
Cable length	30 cm
Rated current	240 mA

## VIDEX-STREET-LED-LEYA-50W-NW

### INDEX: VLE-SLe14-504

Input interface	Free wire ends
Electric shock protection class	I

## Photometric parameters

Useful luminous flux (Φuse)	5000 Lm
Correlated color temperature	4000K (neutral white)
Peak luminous intensity	3100 cd
Beam angle	90 × 130°
Color rendering index (CRI)	Ra > 80
On/Off cycles	20000
Lifetime	30000 h
Useful luminous flux of the light source reference	in a wide cone (120°)

## Additional information

Vertical adjustment range	200°
Place of installation	Pillar, Wall
Place of application	outdoor
Impact protection	IK07
Housing colour	Gray
Minimum distance from the illuminated object	0.5 m
Diffuser material	Polycarbonate (PC)
Operating temperature range	-20° +50°C
Mercury content	Does not contain
Ingress protection	IP65

**VIDEX**<sup>®</sup>

VIDEX-STREET-LED-LEYA-50W-NW

**INDEX: VLE-SLe14-504****Housing material** Aluminum alloy**Dimensions**

<b>EAN</b>	5904405541074
<b>Height</b>	487 mm
<b>Depth</b>	88 mm
<b>Width</b>	151 mm
<b>In the package</b>	1 pc.
<b>Outer box</b>	10 pcs.

**Signs marking goods**

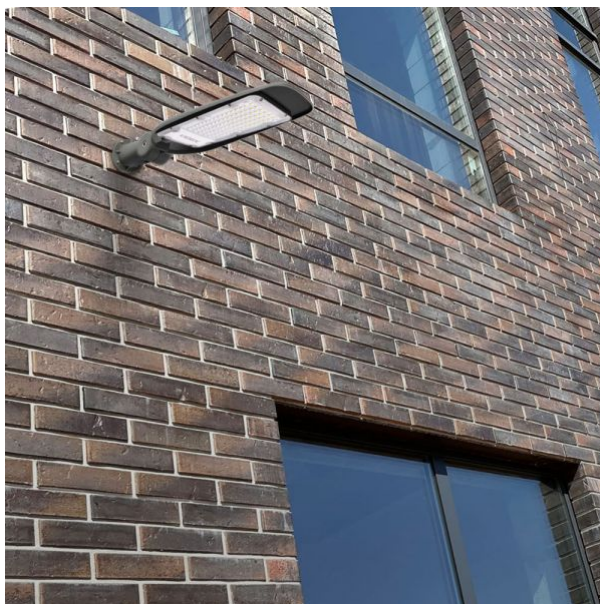
**Packaging marking** Recycling of waste, CE, Utilization



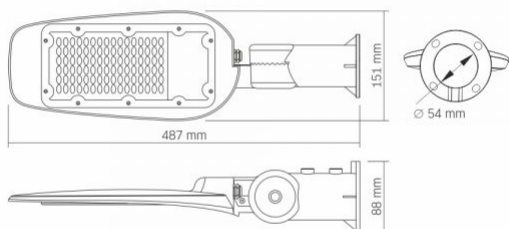
# VIDEX®

## VIDEX-STREET-LED-LEYA-50W-NW

### INDEX: VLE-SLe14-504



We reserve the right to make technical changes. The data contained in this material is not legally binding.



Allegro opt Sp. z o.o., ul. Mierzeja Wiślana 11,  
30-732 Krakow, Poland.



The product must be used outdoors



Minimum distance from the illuminated object



Protection against electric shock class I. A product in which the means of protection against electric shock, in addition to the main insulation, is an additional protective circuit connected to the grounding of the power supply network



Waste recycling after the end of the product's service life



The product meets the requirements of EU directives



It is forbidden to throw away waste equipment marked with the symbol of a crossed-out bin with other waste



90°-130°

Effective light beam angle



Ra ≥ 80

Ra > 80 - color rendering index



ON/OFF  
20 000

Rated On/off cycles



IK07

The product withstands a medium impact (e.g., from a blunt object)



30 000 h

Nominal lifetime (hours)



Not Dimmable

The product is incompatible with light regulators



-20°C +50°C

Operating temperatures range



Free

The product does not contain mercury



IP65

Class of protection against dust and moisture. The product has full protection against dust and water jets from all directions

Date: 31.03.2025