

## TECHNICAL CARD



LED RECHARGEABLE NIGHT LIGHT with MOTION SENSOR



Pursuant to the provisions of the WEEE Act, it is forbidden to put waste equipment marked with the symbol of a crossed out bin together with other waste. The user, wishing to get rid of electronic and electrical equipment, is obliged to return it to a waste equipment collection point. There are no hazardous components in the equipment that have a particularly negative impact on the environment and human health.



Ra ≥ 80



Free



Dimmable



-20° +40°C



Free



IP20

## WARRANTY 2 YEARS

### General parameters

Light source replaceable	no
--------------------------	----

### Type of light source

Dimmable	yes
----------	-----

Technology	LED
------------	-----

### Electrical parameters

On-mode power (Pon)	2 W
---------------------	-----

Input interface	USB-C
-----------------	-------

Electric shock protection class	III
---------------------------------	-----

### Photometric parameters

Luminous flux	50 Lm, 110 Lm
---------------	---------------

Correlated color temperature	6500K (cold white), 4000K (neutral white), 3000K (warm white)
------------------------------	---

Color rendering index (CRI)	Ra > 80
-----------------------------	---------

CRI Min	Ra 80
---------	-------

## VIDEX VL-NL108W

### INDEX: VL-NL108W

CRI Max	Ra 88
---------	-------

### Additional information

Place of application	indoor
----------------------	--------

Housing colour	White
----------------	-------

Ultraviolet radiation	no
-----------------------	----

Motion sensor	yes
---------------	-----

Sensor type	PIR
-------------	-----

Sensor detection angle	120°
------------------------	------

Sensor time delay	20 s
-------------------	------

Sensor detection distance	≤6 m
---------------------------	------

Operating temperature range	-20° +40°C
-----------------------------	------------

Battery voltage	3.7 V
-----------------	-------

Battery type	Li-ion
--------------	--------

Battery capacity	2000 mAh
------------------	----------

Battery replaceable	no
---------------------	----

Mercury content	Does not contain
-----------------	------------------

Ingress protection	IP20
--------------------	------

Housing material	ABS
------------------	-----

### Dimensions

EAN	4820246489515
-----	---------------

In the package	1 pc.
----------------	-------

Height	32 mm
--------	-------

Outer box	60 pcs.
-----------	---------

Width	120 mm
-------	--------

Depth	45 mm
-------	-------

**VIDEX<sup>®</sup>**

VIDEX VL-NL108W

**INDEX: VL-NL108W****Unit nett weight** 107g**Signs marking goods****Packaging marking**Recycling of  
waste, CE,  
Utilization

**VIDEX<sup>®</sup>**

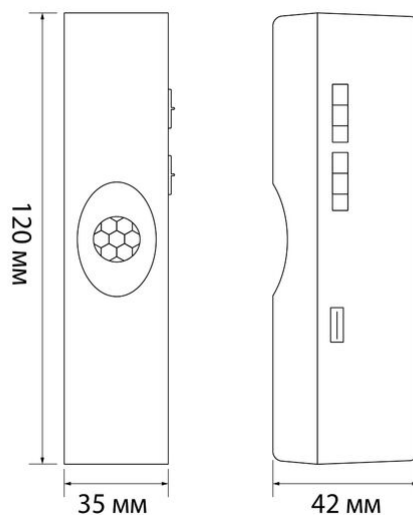
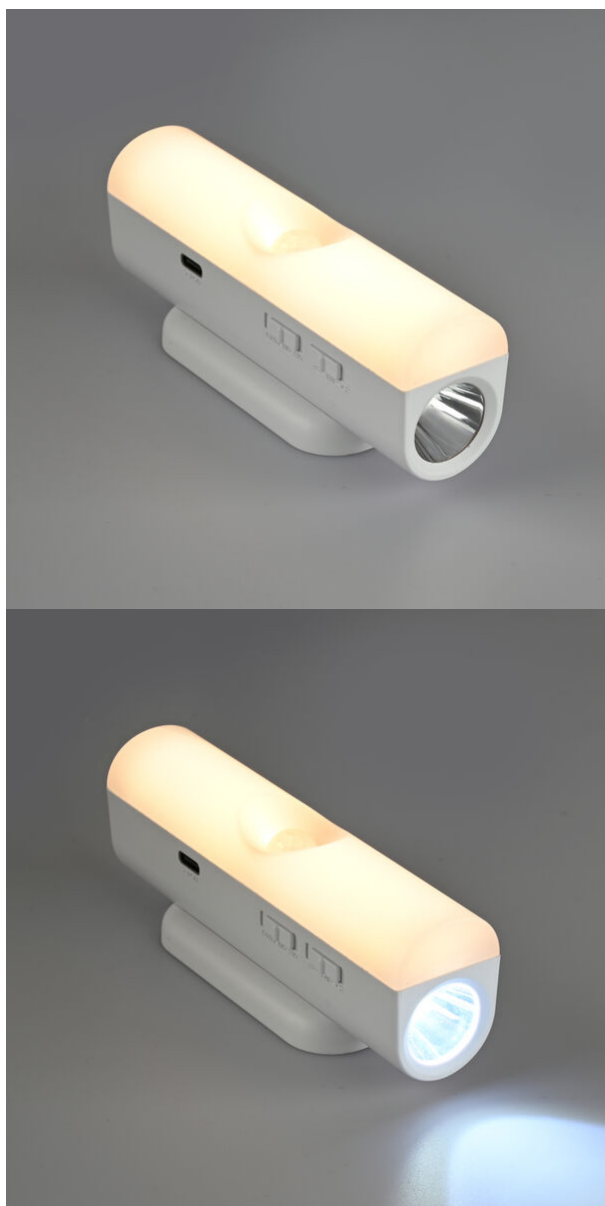
VIDEX VL-NL108W

**INDEX: VL-NL108W**

**VIDEX®**

VIDEX VL-NL108W

**INDEX: VL-NL108W**

**VIDEX<sup>®</sup>****VIDEX VL-NL108W****INDEX: VL-NL108W**

We reserve the right to make technical changes. The data contained in this material is not legally binding.

Allegro opt Sp. z o.o., ul. Mierzeja Wiślana 11,  
30-732 Krakow, Poland.

## INDEX: VL-NL108W



The product must be used indoors



Class III protection against electric shock - ensured by supplying a specific product with a safe very low voltage (SELV) without the risk of creating a voltage above safe levels



Waste recycling after the end of the product's service life



The product meets the requirements of EU directives



It is forbidden to throw away waste equipment marked with the symbol of a crossed-out bin with other waste



— Ra > 80 - color rendering index



— The product does not emit ultraviolet light



— The product supports brightness adjustment



— Operating temperatures range



— The product does not contain mercury



— Class of protection against dust and moisture. Protection against solid objects larger than 12 mm; no protection against moisture