

TECHNICAL CARD



LED Ceiling Fixture



VIDEX®



120°



Ra ≥ 80



20 000



25 000 h



Free



Not Dimmable



-20° +40°C



Free



IP44

WARRANTY 2 YEARS

NEUTRAL WHITE



4000K

Neutral White / Neutralny biały / Neutralni bila / Blanc neuter / Neutrálna biela / Neutraal wit / Semleges feher / Nevtalno bela / Neutralno bijela / Neutralweiß / Alb neutru / Neutralus balta / Neitrāls balta / Neutraalne valge / Нейтрално бяла / Bianco neutro.

General parameters

Light source or containing product	Containing product
Light source replaceable	by the producer
Control gear replaceable	by the producer

Type of light source

Energy efficiency class of the contained light source F

Dimmable no

Electrical parameters

On-mode power (Pon)	48 W
Rated voltage, frequency	AC 176-264 V, 50/60 Hz
Rated current	230 mA

VIDEX-MILA-48W-NW

INDEX: VLE-CLR-484R

Input interface	Terminal block
Electric shock protection class	I

Photometric parameters

Useful luminous flux of the contained light source (Φuse)	5160 Lm
Correlated color temperature	4000K (neutral white)
Beam angle	120°
Color rendering index (CRI)	Ra > 80
On/Off cycles	20000
Lifetime (L70B50)	25000 h
Useful luminous flux of the light source reference	in a sphere (360°)

Additional information

Place of installation	Ceiling, Wall
Place of application	indoor
Housing colour	White
Diffuser material	PMMA
Ultraviolet radiation	no
Operating temperature range	-20° +40°C
Mercury content	Does not contain
Ingress protection	IP44
Housing material	Plastic

Dimensions

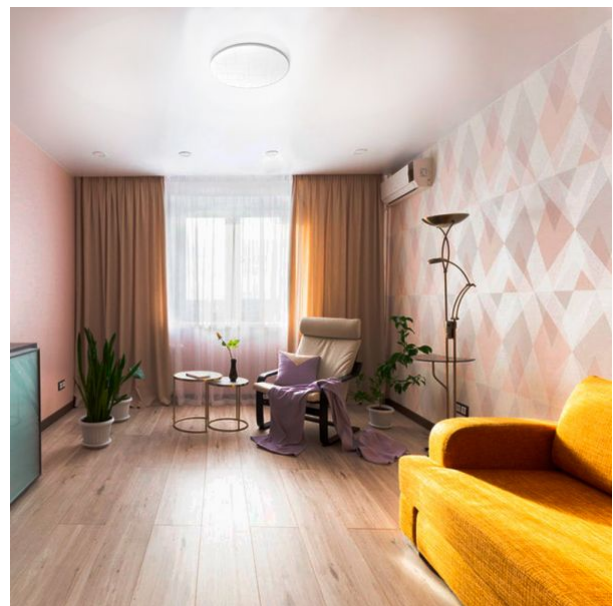
EAN 5904405540572

VIDEX®

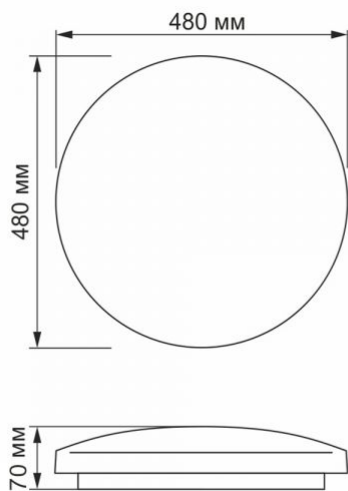
VIDEX-MILA-48W-NW

INDEX: VLE-CLR-484R

Height	480 mm
Outer box	10 pcs.
Width	480 mm
Depth	70 mm



INDEX: VLE-CLR-484R



We reserve the right to make technical changes. The data contained in this material is not legally binding.

Allegro opt Sp. z o.o., ul. Mierzeja Wiślana 11,
30-732 Krakow, Poland.



The product must be used indoors



Protection against electric shock class I. A product in which the means of protection against electric shock, in addition to the main insulation, is an additional protective circuit connected to the grounding of the power supply network



120°

— Rated beam angle



Ra ≥ 80

— Ra > 80 - color rendering index



20 000

— Rated On/off cycles



25 000 h

— Nominal lifetime (hours)



Free

— The product does not emit ultraviolet light



Not Dimmable

— The product is incompatible with light regulators



-20° +40°C

— Operating temperatures range



Free

— The product does not contain mercury



IP44

— Class of protection against dust and moisture. Protection against solid foreign objects with a diameter of 1 mm and greater and against water splashes