

TECHNICAL CARD

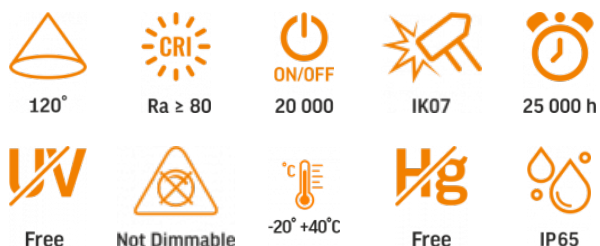


LED Bulkhead Light



Pursuant to the provisions of the WEEE Act, it is forbidden to put waste equipment marked with the symbol of a crossed out bin together with other waste. The user, wishing to get rid of electronic and electrical equipment, is obliged to return it to a waste equipment collection point. There are no hazardous components in the equipment that have a particularly negative impact on the environment and human health.

VIDEX®



WARRANTY 2 YEARS

NEUTRAL WHITE



Neutral White / Neutralny biały / Neutralni bila / Blanc neuter / Neutrálna biela / Neutraal wit / Semleges feher / Nevrnalno bela / Neutralno bijela / Neutralweiß / Alb neutru / Neutralus balta / Neitrāls balta / Neutraalne valge / Неутрално бяла / Bianco neutro.

General parameters

Light source or containing product	Containing product
Light source replaceable	by the producer

Type of light source

Energy efficiency class of the contained light source	F
Dimmable	no

Electrical parameters

On-mode power (Pon)	15 W
Rated voltage, frequency	AC 220-240 V, 50/60 Hz
Rated current	130 mA
Input interface	Terminal block

VIDEX-BULKHEAD-LED-LENA-15W-NW

INDEX: VLE-BHFR-155

Electric shock protection class II

Photometric parameters

Useful luminous flux of the contained light source (Φuse)	1550 Lm
Correlated color temperature	5000K (neutral white)
Beam angle	120°
Color rendering index (CRI)	Ra > 80
On/Off cycles	20000
Lifetime (L70B50)	25000 h
Useful luminous flux of the light source reference	in a sphere (360°)

Additional information

Place of installation	Ceiling, Flat surface, Wall
Place of application	indoor, outdoor
Impact protection	IK07
Housing colour	White
Diffuser material	Polycarbonate (PC)
Minimum distance from the illuminated object	0.5 m
Ultraviolet radiation	no
Operating temperature range	-20° +40°C
Mercury content	Does not contain
Ingress protection	IP65
Housing material	Plastic

VIDEX®

VIDEX-BULKHEAD-LED-LENA-15W-NW

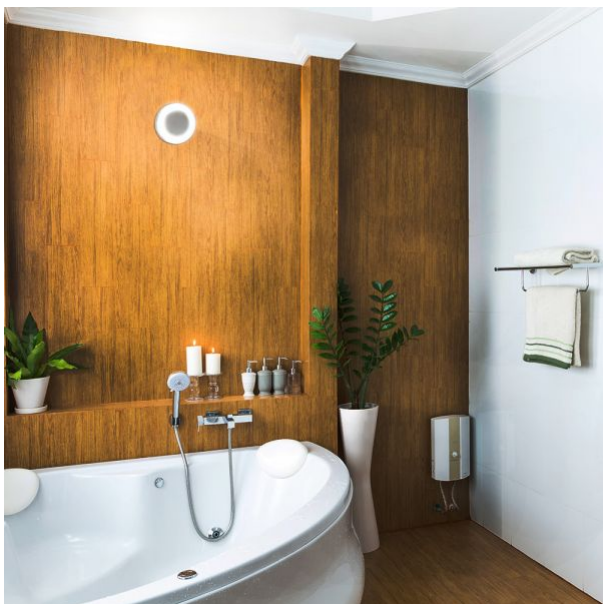
INDEX: VLE-BHFR-155

Dimensions

EAN	5904405540923
Height	190 mm
Outer box	24 pcs.
Width	190 mm
Depth	42 mm



INDEX: VLE-BHFR-155



We reserve the right to make technical changes. The data contained in this material is not legally binding.

Allegro opt Sp. z o.o., ul. Mierzeja Wiślana 11,
30-732 Krakow, Poland.



The product must be used indoors



The product must be used outdoors



Class of protection against electric shock II - provided not only by basic insulation but also by double or reinforced insulation



Minimum distance from the illuminated object



120°

Rated beam angle



Ra ≥ 80

Ra > 80 - color rendering index



20 000

Rated On/off cycles



IK07

The product withstands a medium impact (e.g., from a blunt object)



25 000 h

Nominal lifetime (hours)



Free

The product does not emit ultraviolet light



Not Dimmable

The product is incompatible with light regulators



-20° +40°C

Operating temperatures range



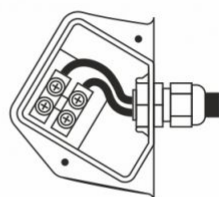
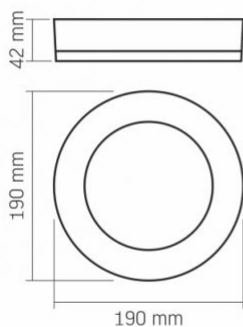
Free

The product does not contain mercury



IP65

Class of protection against dust and moisture. The product has full protection against dust and water jets from all directions



Integrated terminal block