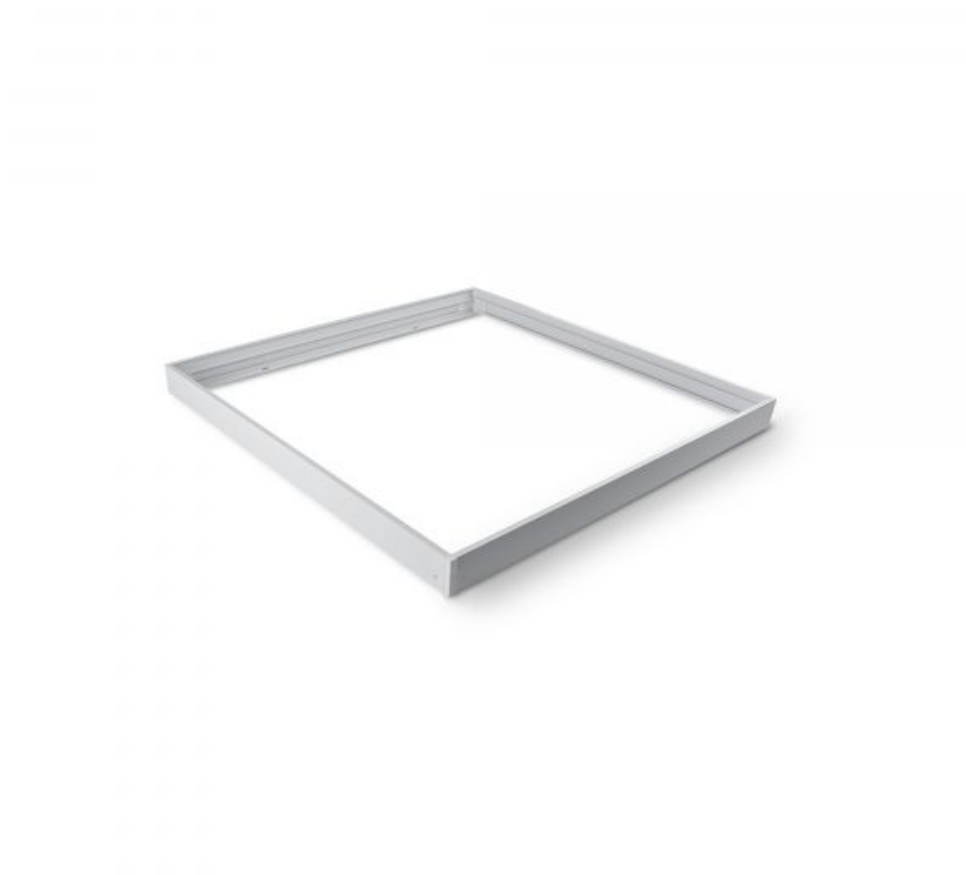


## TECHNICAL CARD



Surface-mounted frame



Pursuant to the provisions of the WEEE Act, it is forbidden to put waste equipment marked with the symbol of a crossed out bin together with other waste. The user, wishing to get rid of electronic and electrical equipment, is obliged to return it to a waste equipment collection point. There are no hazardous components in the equipment that have a particularly negative impact on the environment and human health.

**INDEX: VL-PFS**
**Additional information**

<b>Housing colour</b>	White
<b>Housing material</b>	Aluminum, Plastic

**Dimensions**

<b>EAN</b>	5904405541050
<b>Height</b>	600 mm
<b>Depth</b>	50 mm
<b>Width</b>	600 mm
<b>In the package</b>	1 pc.
<b>Outer box</b>	25 pcs.
<b>Unit nett weight</b>	510g

**Signs marking goods**

<b>Packaging marking</b>	CE
--------------------------	----



**INDEX: VL-PFS**

We reserve the right to make technical changes. The data contained in this material is not legally binding.

Allegro opt Sp. z o.o., ul. Mierzeja Wiślana 11,  
30-732 Krakow, Poland.



The product meets the requirements of EU directives