

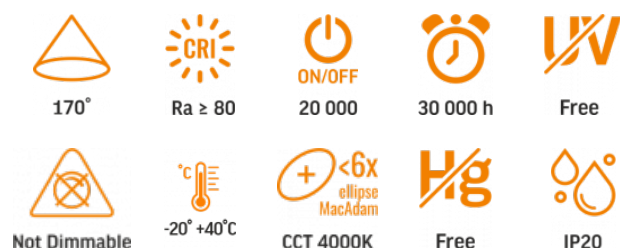
## TECHNICAL CARD



LED Surface Downlight Fixture



Pursuant to the provisions of the WEEE Act, it is forbidden to put waste equipment marked with the symbol of a crossed out bin together with other waste. The user, wishing to get rid of electronic and electrical equipment, is obliged to return it to a waste equipment collection point. There are no hazardous components in the equipment that have a particularly negative impact on the environment and human health.

**INDEX: VLE-DLSS-184**

**WARRANTY 2 YEARS**


Neutral White / Neutralny biały / Neutralni bila / Blanc neuter / Neutrálina biela / Neutraal wit / Semleges feher / Nevtralno bela / Neutralno bijela / Neutralweiß / Alb neutru / Neutralus balta / Neitrāls balta / Neutraalne valge / Нейтрально бяла / Bianco neutro.

**General parameters**

<b>Light source or containing product</b>	Containing product
<b>Control gear replaceable</b>	by the producer
<b>Light source replaceable</b>	by the producer

**Type of light source**

<b>Dimmable</b>	no
<b>Directional (DLS) or non-directional (NDLS) light source</b>	NDLS
<b>Connected light source (cls)</b>	no
<b>Color-tunable light source</b>	no
<b>Mains (MLS) or non-mains (NMLS) light source</b>	NMLS
<b>High luminance light source</b>	No
<b>Anti-glare shield</b>	No

<b>Technology</b>	LED
<b>Energy efficiency class of the contained light source</b>	E

**Electrical parameters**

<b>On-mode power (Pon)</b>	15 W
<b>Rated voltage, frequency</b>	AC 220-240 V, 50/60 Hz
<b>Rated current</b>	120 mA
<b>Input interface</b>	Free wire ends
<b>Electric shock protection class</b>	II
<b>Energy consumption in on-mode of the light source (kWh/1000h)</b>	18
<b>Displacement factor (cos φ1)</b>	-
<b>Survival factor</b>	0.9

**Photometric parameters**

<b>Useful luminous flux of the contained light source (Φuse)</b>	1850 Lm
<b>Correlated color temperature</b>	4000K (neutral white)
<b>Beam angle</b>	170°
<b>Color rendering index (CRI)</b>	Ra > 80
<b>On/Off cycles</b>	20000
<b>Lifetime</b>	30000 h
<b>Useful luminous flux of the light source reference</b>	in a sphere (360°)
<b>Chromaticity coordinates (x)</b>	0.38
<b>Chromaticity coordinates (y)</b>	0.38
<b>R9 colour rendering index value</b>	>0

**INDEX: VLE-DLSS-184**

<b>The lumen maintenance factor</b>	≥96%
<b>Colour consistency in MacAdam ellipses (SDCM)</b>	<6 (4000K)
<b>Flicker metric (Pst LM)</b>	-
<b>Stroboscopic effect metric (SVM)</b>	-
<b>CRI Min</b>	Ra 80
<b>CRI Max</b>	Ra 89

**Additional information**

<b>Place of installation</b>	Ceiling, Flat surface, Wall
<b>Place of application</b>	indoor
<b>Housing colour</b>	White
<b>Diffuser material</b>	Plastic
<b>Ultraviolet radiation</b>	no
<b>Operating temperature range</b>	-20° +40°C
<b>Suitable for installation in normally flammable surfaces</b>	yes
<b>Mercury content</b>	Does not contain
<b>Ingress protection</b>	IP20
<b>Housing material</b>	Iron alloy

**Dimensions**

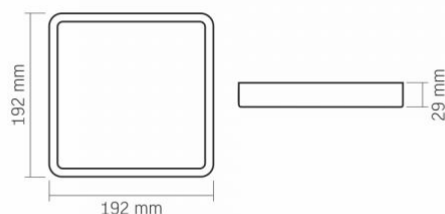
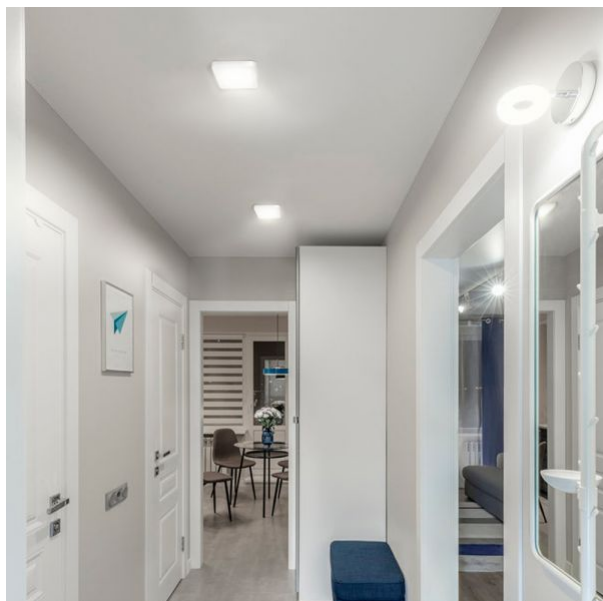
<b>EAN</b>	5904405540763
<b>Height</b>	192 mm
<b>Depth</b>	29 mm
<b>Width</b>	192 mm
<b>In the package</b>	1 pc.

<b>Outer box</b>	20 pcs.
<b>Unit nett weight</b>	520g

**Signs marking goods**

<b>Packaging marking</b>	Recycling of waste, CE, Utilization
--------------------------	-------------------------------------



**INDEX: VLE-DLSS-184**


We reserve the right to make technical changes. The data contained in this material is not legally binding.

Allegro opt Sp. z o.o., ul. Mierzeja Wiślana 11,  
30-732 Krakow, Poland.



The product must be used indoors



Class of protection against electric shock II - provided not only by basic insulation but also by double or reinforced insulation



The product can be installed and used in/on normally flammable surfaces



Waste recycling after the end of the product's service life



The product meets the requirements of EU directives



It is forbidden to throw away waste equipment marked with the symbol of a crossed-out bin with other waste



Rated beam angle



Ra > 80 - color rendering index



Rated On/off cycles



Nominal lifetime (hours)



The product does not emit ultraviolet light



The product is incompatible with light regulators



Operating temperatures range



Colour consistency in MacAdam ellipses (SDCM)



The product does not contain mercury



Class of protection against dust and moisture. Protection against solid objects larger than 12 mm; no protection against moisture