

VIDEX®

VIDEX 50W 1.2M 5000K 5000Lm Black

INDEX: VL-BNL02-50125B

TECHNICAL CARD



LED Linkable Linear Light

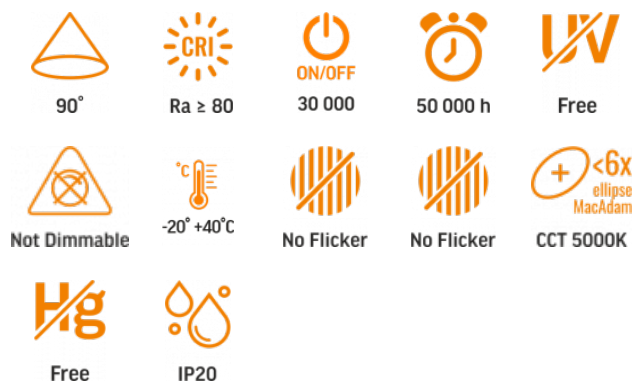


Pursuant to the provisions of the WEEE Act, it is forbidden to put waste equipment marked with the symbol of a crossed out bin together with other waste. The user, wishing to get rid of electronic and electrical equipment, is obliged to return it to a waste equipment collection point. There are no hazardous components in the equipment that have a particularly negative impact on the environment and human health.

VIDEX®

VIDEX 50W 1.2M 5000K 5000Lm Black

INDEX: VL-BNL02-50125B



WARRANTY 5 YEARS

NEUTRAL WHITE



Neutral White / Neutralny biały / Neutralni bila / Blanc neuter / Neutrálna biela / Neutraal wit / Semleges feher / Nevtralno bela / Neutralno bijela / Neutralweiß / Alb neutru / Neutralus balta / Neitrāls balta / Neutraalne valge / Нейтрално бяла / Bianco neutro.

General parameters

Light source or containing product	Light source
Control gear replaceable	by the producer
Light source replaceable	by the producer

Type of light source

Energy class of the light source	E
Dimmable	no
Directional (DLS) or non-directional (NDLS) light source	DLS
Connected light source (cls)	no
Color-tunable light source	no

Mains (MLS) or non-mains (NMLS) light source	MLS
High luminance light source	No
Anti-glare shield	No
Technology	LED

Electrical parameters

On-mode power (Pon)	50 W
Rated voltage, frequency	AC 170-265 V, 50/60 Hz
Rated current	252 mA
Input interface	Power plug
Electric shock protection class	I
Displacement factor (cos φ1)	0.9
Survival factor	0.9
Energy consumption in on-mode of the light source (kWh/1000h)	50

Photometric parameters

Useful luminous flux (Φuse)	5000 Lm
Correlated color temperature	5000K (neutral white)
Beam angle	90°
Color rendering index (CRI)	Ra > 80
On/Off cycles	30000
Lifetime (L70B50)	50000 h
Useful luminous flux of the light source reference	in a wide cone (120°)
Chromaticity coordinates (x)	0.35
Chromaticity coordinates (y)	0.36

INDEX: VL-BNL02-50125B

R9 colour rendering index value	>0
The lumen maintenance factor	≥96%
Flicker metric (Pst LM)	≤1
Stroboscopic effect metric (SVM)	≤0.4
Colour consistency in MacAdam ellipses (SDCM)	<6 (5000K)
CRI Min	Ra 80
CRI Max	Ra 88

Additional information

Place of installation	Ceiling, Recessed, Flat surface, Suspension
Place of application	indoor
Housing colour	Black
Diffuser material	Plastic
Minimum distance from the illuminated object	0.5 m
Ultraviolet radiation	no
Operating temperature range	-20° +40°C
Suitable for installation in normally flammable surfaces	yes
Mercury content	Does not contain
Ingress protection	IP20
Housing material	Aluminum

Dimensions

EAN	4820246485548
In the package	1 pc.

Height	55 mm
Outer box	12 pcs.
Width	55 mm
Depth	1200 mm
Unit nett weight	1.18kg

Signs marking goods

Packaging marking

Recycling of
waste, CE,
Utilization



VIDEX[®]

VIDEX 50W 1.2M 5000K 5000Lm Black

INDEX: VL-BNL02-50125B

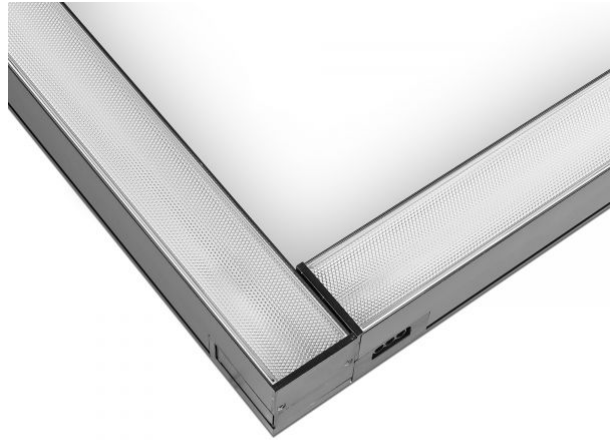
VIDEX[®]

VIDEX 50W 1.2M 5000K 5000Lm Black

INDEX: VL-BNL02-50125B

VIDEX[®]

VIDEX 50W 1.2M 5000K 5000Lm Black

INDEX: VL-BNL02-50125B

VIDEX®

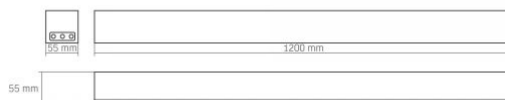
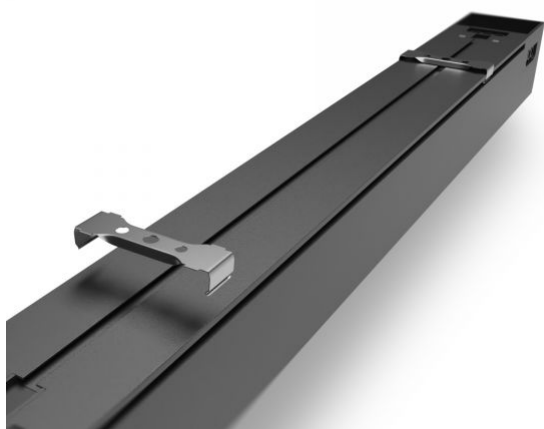
VIDEX 50W 1.2M 5000K 5000Lm Black

INDEX: VL-BNL02-50125B

VIDEX®

VIDEX 50W 1.2M 5000K 5000Lm Black


INDEX: VL-BNL02-50125B



We reserve the right to make technical changes. The data contained in this material is not legally binding.

Allegro opt Sp. z o.o., ul. Mierzeja Wiślana 11,
30-732 Krakow, Poland.

INDEX: VL-BNL02-50125B

-  The product must be used indoors
-  Protection against electric shock class I. A product in which the means of protection against electric shock, in addition to the main insulation, is an additional protective circuit connected to the grounding of the power supply network
-  Minimum distance from the illuminated object
0,5 m
-  The product can be installed and used in/on normally flammable surfaces
-  Waste recycling after the end of the product's service life
-  The product meets the requirements of EU directives
-  It is forbidden to throw away waste equipment marked with the symbol of a crossed-out bin with other waste
-  — Rated beam angle
90°
-  — Ra > 80 - color rendering index
Ra > 80
-  — Rated On/off cycles
ON/OFF
30 000
-  — Nominal lifetime (hours)
50 000 h
-  — The product does not emit ultraviolet light
Free
-  — The product is incompatible with light regulators
Not Dimmable
-  — Operating temperatures range
-20° +40°C
-  — The flickering of the light does not exceed the permissible level
No Flicker
-  — The product has minimal flickering, which should not cause discomfort or danger
No Flicker
-  — Colour consistency in MacAdam ellipses (SDCM)
CCT 5000K
-  — The product does not contain mercury
Free
-  — Class of protection against dust and moisture. Protection against solid objects larger than 12 mm; no protection against moisture
IP20