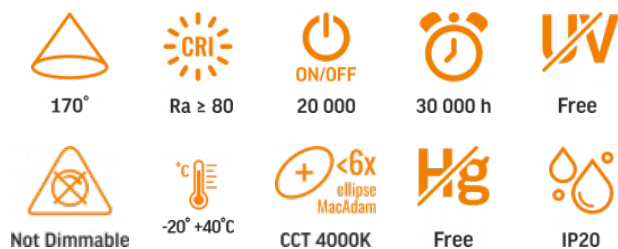


## TECHNICAL CARD



LED Surface Downlight Fixture

## INDEX: VLE-DLRS-124



## WARRANTY 2 YEARS



Neutral White / Neutralny biały / Neutralni bila / Blanc neuter / Neutrálina biela / Neutraal wit / Semleges feher / Nevtralno bela / Neutrálno bijela / Neutralweiß / Alb neutru / Neutralus balta / Neitrāls balta / Neutraalne valge / Нейтрально бяла / Bianco neutro.

## General parameters

Light source or containing product	Containing product
Control gear replaceable	by the producer
Light source replaceable	by the producer

## Type of light source

Dimmable	no
Directional (DLS) or non-directional (NDLS) light source	NDLS
Connected light source (cls)	no
Color-tunable light source	no
Mains (MLS) or non-mains (NMLS) light source	NMLS
High luminance light source	No
Anti-glare shield	No

Technology	LED
Energy efficiency class of the contained light source	E

## Electrical parameters

On-mode power (Pon)	10 W
Rated voltage, frequency	AC 220-240 V, 50/60 Hz
Rated current	90 mA
Input interface	Free wire ends
Electric shock protection class	II
Displacement factor (cos φ1)	-
Survival factor	0.9
Energy consumption in on-mode of the light source (kWh/1000h)	12

## Photometric parameters

Useful luminous flux of the contained light source (Φuse)	1250 Lm
Correlated color temperature	4000K (neutral white)
Beam angle	170°
Color rendering index (CRI)	Ra > 80
On/Off cycles	20000
Lifetime (L70B50)	30000 h
Useful luminous flux of the light source reference	in a sphere (360°)
Chromaticity coordinates (x)	0.38
Chromaticity coordinates (y)	0.38
R9 colour rendering index value	>0

**INDEX: VLE-DLRS-124**

<b>The lumen maintenance factor</b>	≥96%
<b>Flicker metric (Pst LM)</b>	-
<b>Stroboscopic effect metric (SVM)</b>	-
<b>Colour consistency in MacAdam ellipses (SDCM)</b>	<6 (4000K)
<b>CRI Min</b>	Ra 80
<b>CRI Max</b>	Ra 89

**Additional information**

<b>Place of installation</b>	Ceiling, Flat surface, Wall
<b>Place of application</b>	indoor
<b>Housing colour</b>	White
<b>Diffuser material</b>	Plastic
<b>Ultraviolet radiation</b>	no
<b>Operating temperature range</b>	-20° +40°C
<b>Suitable for installation in normally flammable surfaces</b>	yes
<b>Mercury content</b>	Does not contain
<b>Ingress protection</b>	IP20
<b>Housing material</b>	Iron alloy

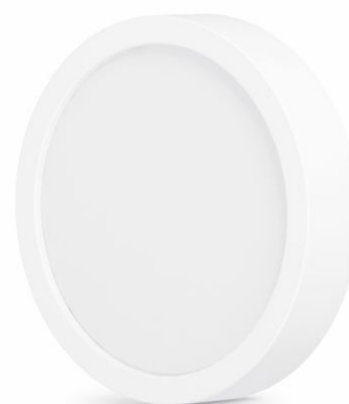
**Dimensions**

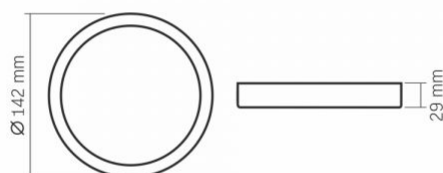
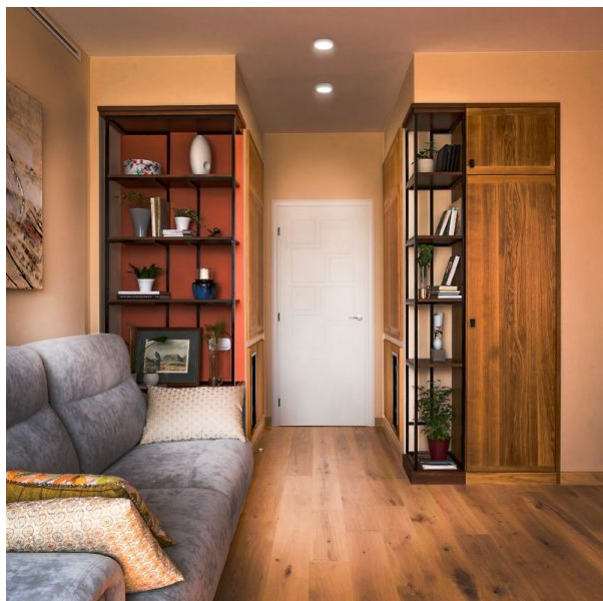
<b>EAN</b>	5904405540725
<b>Height</b>	142 mm
<b>Depth</b>	29 mm
<b>In the package</b>	1 pc.
<b>Outer box</b>	20 pcs.

<b>Width</b>	142 mm
<b>Unit nett weight</b>	270g

**Signs marking goods**

<b>Packaging marking</b>	Recycling of waste, CE, Utilization
--------------------------	-------------------------------------



**INDEX: VLE-DLRS-124**


We reserve the right to make technical changes. The data contained in this material is

not legally binding.

Allegro opt Sp. z o.o., ul. Mierzeja Wiślana 11,  
30-732 Krakow, Poland.



The product must be used indoors



Class of protection against electric shock II - provided not only by basic insulation but also by double or reinforced insulation



The product can be installed and used in/on normally flammable surfaces



Waste recycling after the end of the product's service life



The product meets the requirements of EU directives



It is forbidden to throw away waste equipment marked with the symbol of a crossed-out bin with other waste



170°

— Rated beam angle



Ra ≥ 80

— Ra > 80 - color rendering index



20 000

— Rated On/off cycles



30 000 h

— Nominal lifetime (hours)



Free

— The product does not emit ultraviolet light



Not Dimmable

— The product is incompatible with light regulators



-20° +40°C

— Operating temperatures range



CCT 4000K

— Colour consistency in MacAdam ellipses (SDCM)



Free

— The product does not contain mercury



IP20

— Class of protection against dust and moisture. Protection against solid objects larger than 12 mm; no protection against moisture