

## TECHNICAL CARD



LED module



Pursuant to the provisions of the WEEE Act, it is forbidden to put waste equipment marked with the symbol of a crossed out bin together with other waste. The user, wishing to get rid of electronic and electrical equipment, is obliged to return it to a waste equipment collection point. There are no hazardous components in the equipment that have a particularly negative impact on the environment and human health.

## INDEX: VL-MLC-32C



## WARRANTY 2 YEARS

### General parameters

**Light source or containing product** Light source

### Type of light source

<b>Energy class of the light source</b>	D
<b>Dimmable</b>	no
<b>Directional (DLS) or non-directional (NDLS) light source</b>	NDLS
<b>Connected light source (cls)</b>	no
<b>Color-tunable light source</b>	yes
<b>Mains (MLS) or non-mains (NMLS) light source</b>	MLS
<b>High luminance light source</b>	No
<b>Anti-glare shield</b>	No
<b>Technology</b>	LED

### Electrical parameters

**On-mode power (Pon)** 32 W

<b>Rated voltage, frequency</b>	AC 220-240 V, 50/60 Hz
<b>Rated current</b>	150 mA
<b>Input interface</b>	Terminal block
<b>Electric shock protection class</b>	II
<b>Displacement factor (cos φ1)</b>	0.9
<b>Survival factor</b>	1
<b>Energy consumption in on-mode of the light source (kWh/1000h)</b>	32

### Photometric parameters

<b>Useful luminous flux (Φuse)</b>	4320 Lm
<b>Correlated color temperature</b>	6500K (cold white), 4000K (neutral white), 3000K (warm white)
<b>Beam angle</b>	160°
<b>Color rendering index (CRI)</b>	Ra > 80
<b>On/Off cycles</b>	15000
<b>Lifetime (L70B50)</b>	20000 h
<b>Useful luminous flux of the light source reference</b>	in a sphere (360°)
<b>R9 colour rendering index value</b>	>0
<b>The lumen maintenance factor</b>	≥94.8%
<b>Flicker metric (Pst LM)</b>	≤1
<b>Stroboscopic effect metric (SVM)</b>	≤0.4
<b>Colour consistency in MacAdam ellipses (SDCM)</b>	<6 (3000K), <6 (4000K), <6 (6500K)
<b>CRI Min</b>	Ra 80

**INDEX: VL-MLC-32C**

**CRI Max** Ra 88

**Additional information**

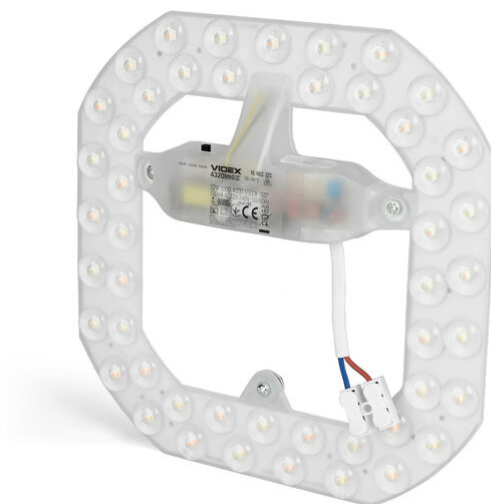
<b>Place of installation</b>	In the light fixture
<b>Place of application</b>	indoor
<b>Housing colour</b>	White
<b>Diffuser material</b>	Polycarbonate (PC)
<b>Ultraviolet radiation</b>	no
<b>Operating temperature range</b>	-20° +40°C
<b>Suitable for installation in normally flammable surfaces</b>	yes
<b>Mercury content</b>	Does not contain
<b>Ingress protection</b>	IP20
<b>Housing material</b>	Aluminum

**Dimensions**

<b>EAN</b>	4820246487863
<b>In the package</b>	1 pc.
<b>Height</b>	193 mm
<b>Outer box</b>	40 pcs.
<b>Width</b>	193 mm
<b>Depth</b>	27 mm
<b>Unit nett weight</b>	115g

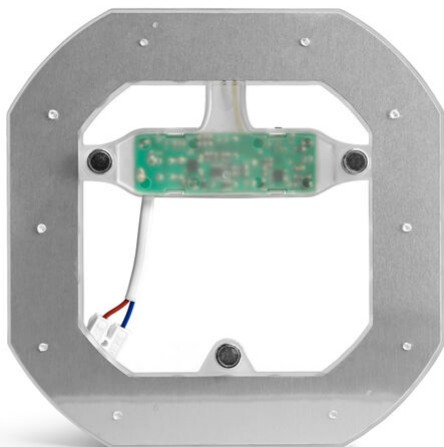
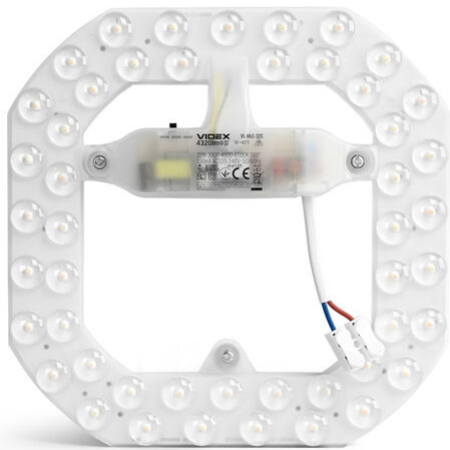
**Signs marking goods**

<b>Packaging marking</b>	CE, Not suitable for use under moisture, Utilization
--------------------------	--



**VIDEX®**

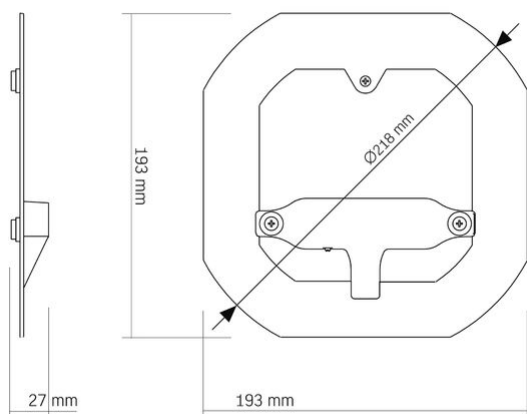
VIDEX VL-MLC-32C 32W 3000K-4000K-6500K

**INDEX: VL-MLC-32C**

INDEX: VL-MLC-32C



### INDEX: VL-MLC-32C



We reserve the right to make technical changes. The data contained in this material is not legally binding.

Allegro opt Sp. z o.o., ul. Mierzeja Wiślana 11,  
30-732 Krakow, Poland.

	The product must be used indoors
	Class of protection against electric shock II - provided not only by basic insulation but also by double or reinforced insulation
	The product can be installed and used in/on normally flammable surfaces
	The product meets the requirements of EU directives
	Not suitable for use under moisture
	It is forbidden to throw away waste equipment marked with the symbol of a crossed-out bin with other waste
	— Ra > 80 - color rendering index
	— Nominal lifetime (hours) 20 000 h
	— The product does not emit ultraviolet light Free
	— The product is incompatible with light regulators Not Dimmable
	— Operating temperatures range -20° +40°C
	— The flickering of the light does not exceed the permissible level No Flicker
	— The product has minimal flickering, which should not cause discomfort or danger No Flicker
	— Colour consistency in MacAdam ellipses (SDCM) CCT 3000K
	— Colour consistency in MacAdam ellipses (SDCM) CCT 4000K
	— Colour consistency in MacAdam ellipses (SDCM) CCT 6500K
	— The product does not contain mercury Free
	— Class of protection against dust and moisture. Protection against solid objects larger than 12 mm; no protection against moisture IP20