

## TECHNICAL CARD



LED Linkable Linear Light

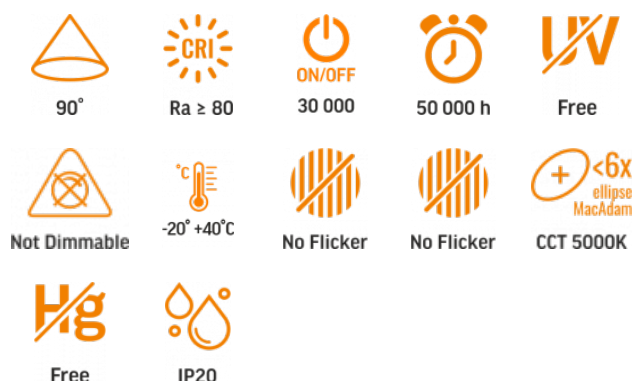


Pursuant to the provisions of the WEEE Act, it is forbidden to put waste equipment marked with the symbol of a crossed out bin together with other waste. The user, wishing to get rid of electronic and electrical equipment, is obliged to return it to a waste equipment collection point. There are no hazardous components in the equipment that have a particularly negative impact on the environment and human health.

# VIDEX®

## VIDEX 24W 0.6M 5000K 2400Lm Black

### INDEX: VL-BNL02-24065B



## WARRANTY 5 YEARS

### NEUTRAL WHITE



Neutral White / Neutralny biały / Neutralni bila / Blanc neuter / Neutrálna biela / Neutraal wit / Semleges feher / Nevtralno bela / Neutrálno bijela / Neutralweiß / Alb neutru / Neutrus balta / Neitrāls balta / Neutraalne valge / Нейтрално бяла / Bianco neutro.

## General parameters

Light source or containing product	Light source
Control gear replaceable	by the producer
Light source replaceable	by the producer

## Type of light source

Energy class of the light source	E
Dimmable	no
Directional (DLS) or non-directional (NDLS) light source	DLS
Connected light source (cls)	no
Color-tunable light source	no

Mains (MLS) or non-mains (NMLS) light source	MLS
High luminance light source	No
Anti-glare shield	No
Technology	LED

## Electrical parameters

On-mode power (Pon)	24 W
Rated voltage, frequency	AC 170-265 V, 50/60 Hz
Rated current	121 mA
Input interface	Power plug
Electric shock protection class	I
Displacement factor (cos φ1)	0.9
Survival factor	0.9
Energy consumption in on-mode of the light source (kWh/1000h)	24

## Photometric parameters

Useful luminous flux (Φuse)	2400 Lm
Correlated color temperature	5000K (neutral white)
Beam angle	90°
Color rendering index (CRI)	Ra > 80
On/Off cycles	30000
Lifetime (L70B50)	50000 h
Useful luminous flux of the light source reference	in a wide cone (120°)
Chromaticity coordinates (x)	0.35
Chromaticity coordinates (y)	0.36

**INDEX: VL-BNL02-24065B**

<b>R9 colour rendering index value</b>	>0
<b>The lumen maintenance factor</b>	≥96%
<b>Flicker metric (Pst LM)</b>	≤1
<b>Stroboscopic effect metric (SVM)</b>	≤0.4
<b>Colour consistency in MacAdam ellipses (SDCM)</b>	<6 (5000K)
<b>CRI Min</b>	Ra 80
<b>CRI Max</b>	Ra 88

**Additional information**

<b>Place of installation</b>	Ceiling, Recessed, Flat surface, Suspension
<b>Place of application</b>	indoor
<b>Housing colour</b>	Black
<b>Diffuser material</b>	Plastic
<b>Minimum distance from the illuminated object</b>	0.5 m
<b>Ultraviolet radiation</b>	no
<b>Operating temperature range</b>	-20° +40°C
<b>Suitable for installation in normally flammable surfaces</b>	yes
<b>Mercury content</b>	Does not contain
<b>Ingress protection</b>	IP20
<b>Housing material</b>	Aluminum

**Dimensions**

<b>EAN</b>	4820246485531
<b>Height</b>	55 mm

<b>Depth</b>	600 mm
<b>In the package</b>	1 pc.
<b>Outer box</b>	20 pcs.
<b>Width</b>	55 mm
<b>Unit nett weight</b>	620g

**Signs marking goods**
**Packaging marking**

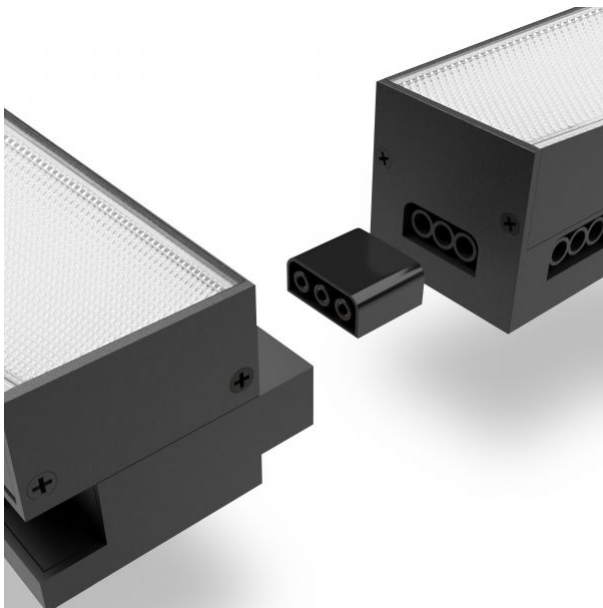
Recycling of  
waste, CE,  
Utilization



**VIDEX®**

VIDEX 24W 0.6M 5000K 2400Lm Black

**INDEX: VL-BNL02-24065B**

**VIDEX<sup>®</sup>****VIDEX 24W 0.6M 5000K 2400Lm Black****INDEX: VL-BNL02-24065B**

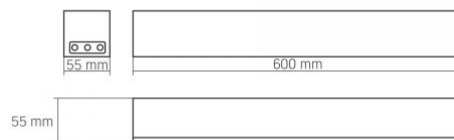
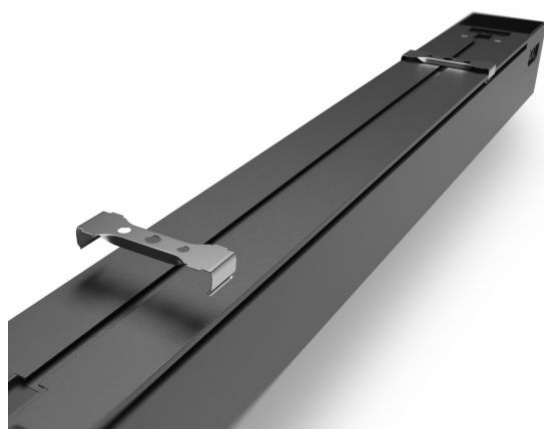
**VIDEX<sup>®</sup>****VIDEX 24W 0.6M 5000K 2400Lm Black****INDEX: VL-BNL02-24065B**

**VIDEX®****VIDEX 24W 0.6M 5000K 2400Lm Black****INDEX: VL-BNL02-24065B**

# VIDEX®

VIDEX 24W 0.6M 5000K 2400Lm Black

INDEX: VL-BNL02-24065B



We reserve the right to make technical changes. The data contained in this material is not legally binding.

Allegro opt Sp. z o.o., ul. Mierzeja Wiślana 11,  
30-732 Krakow, Poland.



**INDEX: VL-BNL02-24065B**


The product must be used indoors



Protection against electric shock class I. A product in which the means of protection against electric shock, in addition to the main insulation, is an additional protective circuit connected to the grounding of the power supply network



Minimum distance from the illuminated object



The product can be installed and used in/on normally flammable surfaces



Waste recycling after the end of the product's service life



The product meets the requirements of EU directives



It is forbidden to throw away waste equipment marked with the symbol of a crossed-out bin with other waste



— Rated beam angle



— Ra > 80 - color rendering index



— Rated On/off cycles



— Nominal lifetime (hours)



— The product does not emit ultraviolet light



— The product is incompatible with light regulators



— Operating temperatures range



— The flickering of the light does not exceed the permissible level



— The product has minimal flickering, which should not cause discomfort or danger



— Colour consistency in MacAdam ellipses (SDCM)



— The product does not contain mercury



— Class of protection against dust and moisture. Protection against solid objects larger than 12 mm; no protection against moisture