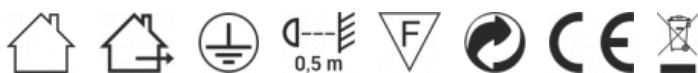


## TECHNICAL CARD



### LED Linkable Linear Light IP65

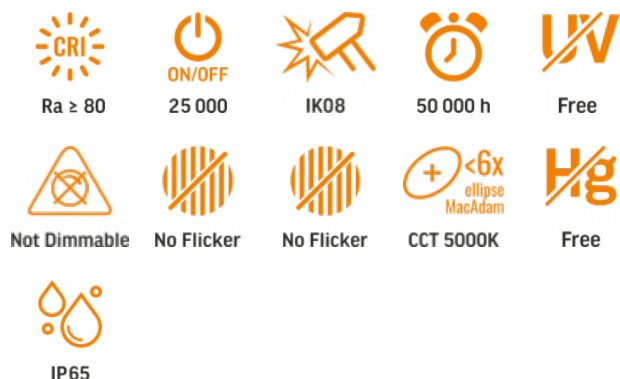


Pursuant to the provisions of the WEEE Act, it is forbidden to put waste equipment marked with the symbol of a crossed out bin together with other waste. The user, wishing to get rid of electronic and electrical equipment, is obliged to return it to a waste equipment collection point. There are no hazardous components in the equipment that have a particularly negative impact on the environment and human health.

# VIDEX®

## VIDEX BNWL05 50W 1.5M 5000K 8000Lm Black

### INDEX: VL-BNWL05-50155B



## WARRANTY 5 YEARS



Neutral White / Neutralny biały / Neutralni bila / Blanc neuter / Neutrálna biela / Neutraal wit / Semleges feher / Nevtralno bela / Neutralno bijela / Neutralweiß / Alb neutru / Neutralus balta / Neitrāls balta / Neutraalne valge / Нейтрално бяла / Bianco neutro.

### General parameters

Light source or containing product	Light source
------------------------------------	--------------

Light source replaceable	no
--------------------------	----

Control gear replaceable	-
--------------------------	---

### Type of light source

Energy class of the light source	C
----------------------------------	---

Dimmable	no
----------	----

Directional (DLS) or non-directional (NDLS) light source	NDLS
----------------------------------------------------------	------

Connected light source (cls)	no
------------------------------	----

Color-tunable light source	no
----------------------------	----

Mains (MLS) or non-mains (NMLS) light source	MLS
----------------------------------------------	-----

High luminance light source	No
-----------------------------	----

Anti-glare shield	No
-------------------	----

Technology	LED
------------	-----

### Electrical parameters

On-mode power (Pon)	50 W
---------------------	------

Rated voltage, frequency	AC 220-240 V, 50/60 Hz
--------------------------	------------------------

Rated current	241 mA
---------------	--------

Input interface	Terminal block
-----------------	----------------

Electric shock protection class	I
---------------------------------	---

Displacement factor (cos φ1)	0.9
------------------------------	-----

Survival factor	0.9
-----------------	-----

Energy consumption in on-mode of the light source (kWh/1000h)	50
---------------------------------------------------------------	----

### Photometric parameters

Useful luminous flux (Φuse)	8000 Lm
-----------------------------	---------

Correlated color temperature	5000K (neutral white)
------------------------------	-----------------------

Beam angle	140°
------------	------

Color rendering index (CRI)	Ra > 80
-----------------------------	---------

On/Off cycles	25000
---------------	-------

Lifetime (L70B50)	50000 h
-------------------	---------

Useful luminous flux of the light source reference	in a sphere (360°)
----------------------------------------------------	--------------------

Chromaticity coordinates (x)	0.35
------------------------------	------

Chromaticity coordinates (y)	0.36
------------------------------	------

R9 colour rendering index value	>0
---------------------------------	----

### INDEX: VL-BNWL05-50155B

<b>The lumen maintenance factor</b>	≥96.5%
<b>Flicker metric (Pst LM)</b>	≤1
<b>Stroboscopic effect metric (SVM)</b>	≤0.4
<b>Colour consistency in MacAdam ellipses (SDCM)</b>	<6 (5000K)
<b>CRI Min</b>	Ra 80
<b>CRI Max</b>	Ra 88

### Additional information

<b>Place of installation</b>	Ceiling, Flat surface, Wall, Suspension
<b>Place of application</b>	indoor, outdoor
<b>Impact protection</b>	IK08
<b>Housing colour</b>	Black
<b>Minimum distance from the illuminated object</b>	0.5 m
<b>Ultraviolet radiation</b>	no
<b>Operating temperature range</b>	-25° +40°C
<b>Suitable for installation in normally flammable surfaces</b>	yes
<b>Mercury content</b>	Does not contain
<b>Ingress protection</b>	IP65
<b>Housing material</b>	PC

### Dimensions

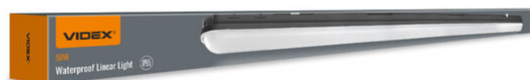
<b>EAN</b>	4820246488426
<b>In the package</b>	1 pc.

<b>Height</b>	71 mm
<b>Outer box</b>	9 pcs.
<b>Width</b>	1490 mm
<b>Depth</b>	61 mm
<b>Unit nett weight</b>	1.5kg

### Signs marking goods

#### Packaging marking

Recycling of waste, CE, Utilization



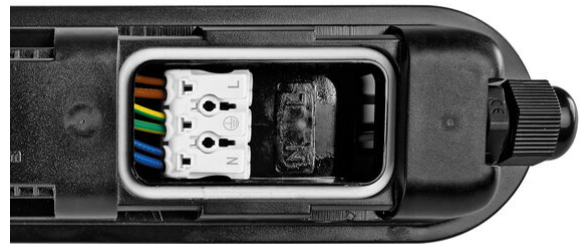
**VIDEX<sup>®</sup>**

VIDEX BNWL05 50W 1.5M 5000K 8000Lm Black

**INDEX: VL-BNWL05-50155B**

**VIDEX<sup>®</sup>**

VIDEX BNWL05 50W 1.5M 5000K 8000Lm Black

**INDEX: VL-BNWL05-50155B**

**VIDEX<sup>®</sup>**

VIDEX BNWL05 50W 1.5M 5000K 8000Lm Black

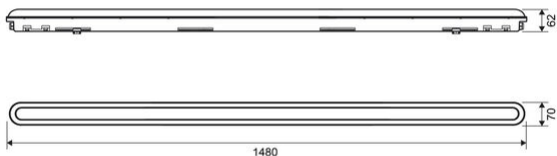
**INDEX: VL-BNWL05-50155B**

# VIDEX®

## VIDEX BNWL05 50W 1.5M 5000K 8000Lm Black

### INDEX: VL-BNWL05-50155B

30-732 Krakow, Poland.



We reserve the right to make technical changes. The data contained in this material is not legally binding.

Allegro opt Sp. z o.o., ul. Mierzeja Wiślana 11,



The product must be used indoors



The product must be used outdoors



Protection against electric shock class I. A product in which the means of protection against electric shock, in addition to the main insulation, is an additional protective circuit connected to the grounding of the power supply network



Minimum distance from the illuminated object



The product can be installed and used in/on normally flammable surfaces



Waste recycling after the end of the product's service life



The product meets the requirements of EU directives



It is forbidden to throw away waste equipment marked with the symbol of a crossed-out bin with other waste



— Ra > 80 - color rendering index



— Rated On/off cycles



— The product withstands strong impacts (e.g., from a heavy object)



— Nominal lifetime (hours)



— The product does not emit ultraviolet light



— The product is incompatible with light regulators



— The flickering of the light does not exceed the permissible level



— The product has minimal flickering, which should not cause discomfort or danger



— Colour consistency in MacAdam ellipses (SDCM)



— The product does not contain mercury



— Class of protection against dust and moisture. The product has full protection against dust and water jets from all directions