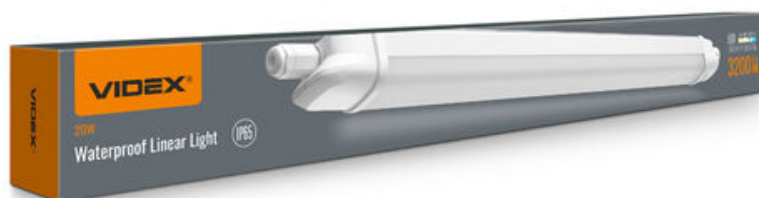


VIDEX®

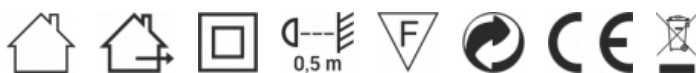
VIDEX 20W 0.6M 5000K 3200Lm White

INDEX: VL-BNWL04-20065

TECHNICAL CARD



LED Linkable Linear Light IP65

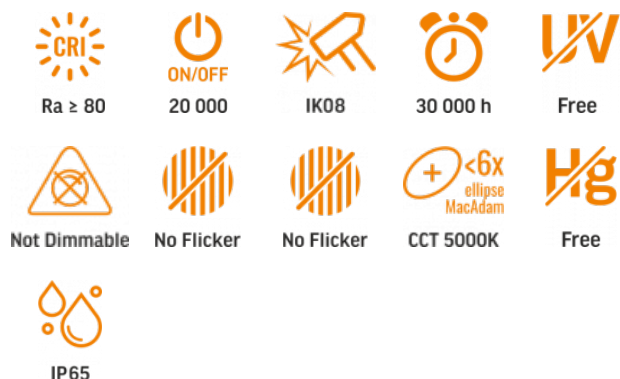


Pursuant to the provisions of the WEEE Act, it is forbidden to put waste equipment marked with the symbol of a crossed out bin together with other waste. The user, wishing to get rid of electronic and electrical equipment, is obliged to return it to a waste equipment collection point. There are no hazardous components in the equipment that have a particularly negative impact on the environment and human health.

VIDEX®

VIDEX 20W 0.6M 5000K 3200Lm White

INDEX: VL-BNWL04-20065



WARRANTY 2 YEARS



Neutral White / Neutralny biały / Neutralni bila / Blanc neuter / Neutrálna biela / Neutraal wit / Semleges feher / Nevtralno bela / Neutralno bijela / Neutralweiß / Alb neutru / Neutralus balta / Neitrāls balta / Neutraalne valge / Нейтрално бяла / Bianco neutro.

General parameters

| | |
|------------------------------------|--------------|
| Light source or containing product | Light source |
|------------------------------------|--------------|

| | |
|--------------------------|---|
| Control gear replaceable | - |
|--------------------------|---|

| | |
|--------------------------|----|
| Light source replaceable | no |
|--------------------------|----|

Type of light source

| | |
|----------------------------------|---|
| Energy class of the light source | C |
|----------------------------------|---|

| | |
|----------|----|
| Dimmable | no |
|----------|----|

| | |
|--|------|
| Directional (DLS) or non-directional (NDLS) light source | NDLS |
|--|------|

| | |
|------------------------------|----|
| Connected light source (cls) | no |
|------------------------------|----|

| | |
|----------------------------|----|
| Color-tunable light source | no |
|----------------------------|----|

| | |
|--|-----|
| Mains (MLS) or non-mains (NMLS) light source | MLS |
|--|-----|

| | |
|-----------------------------|-----|
| High luminance light source | No |
| Anti-glare shield | No |
| Technology | LED |

Electrical parameters

| | |
|---------------------|------|
| On-mode power (Pon) | 20 W |
|---------------------|------|

| | |
|--------------------------|------------------------|
| Rated voltage, frequency | AC 220-240 V, 50/60 Hz |
|--------------------------|------------------------|

| | |
|---------------|--------|
| Rated current | 125 mA |
|---------------|--------|

| | |
|-----------------|----------------|
| Input interface | Terminal block |
|-----------------|----------------|

| | |
|---------------------------------|----|
| Electric shock protection class | II |
|---------------------------------|----|

| | |
|------------------------------|-----|
| Displacement factor (cos φ1) | 0.7 |
|------------------------------|-----|

| | |
|-----------------|-----|
| Survival factor | 0.9 |
|-----------------|-----|

| | |
|---|----|
| Energy consumption in on-mode of the light source (kWh/1000h) | 20 |
|---|----|

Photometric parameters

| | |
|-----------------------------|---------|
| Useful luminous flux (Φuse) | 3200 Lm |
|-----------------------------|---------|

| | |
|------------------------------|-----------------------|
| Correlated color temperature | 5000K (neutral white) |
|------------------------------|-----------------------|

| | |
|------------|------|
| Beam angle | 140° |
|------------|------|

| | |
|-----------------------------|---------|
| Color rendering index (CRI) | Ra > 80 |
|-----------------------------|---------|

| | |
|---------------|-------|
| On/Off cycles | 20000 |
|---------------|-------|

| | |
|-------------------|---------|
| Lifetime (L70B50) | 30000 h |
|-------------------|---------|

| | |
|--|--------------------|
| Useful luminous flux of the light source reference | in a sphere (360°) |
|--|--------------------|

| | |
|------------------------------|------|
| Chromaticity coordinates (x) | 0.35 |
|------------------------------|------|

| | |
|------------------------------|------|
| Chromaticity coordinates (y) | 0.36 |
|------------------------------|------|

| | |
|---------------------------------|----|
| R9 colour rendering index value | >0 |
|---------------------------------|----|

INDEX: VL-BNWL04-20065

| | |
|--|------------|
| The lumen maintenance factor | ≥93.12% |
| Flicker metric (Pst LM) | ≤1 |
| Stroboscopic effect metric (SVM) | ≤0.4 |
| Colour consistency in MacAdam ellipses (SDCM) | <6 (5000K) |
| CRI Min | Ra 80 |
| CRI Max | Ra 88 |

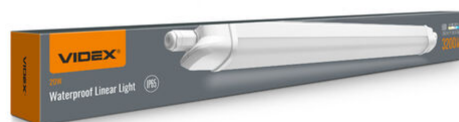
| | |
|-------------------------|---------|
| In the package | 1 pc. |
| Outer box | 20 pcs. |
| Height | 63 mm |
| Width | 50 mm |
| Depth | 665 mm |
| Unit nett weight | 235g |

Additional information

| | |
|---|---|
| Place of installation | Ceiling, Flat surface, Wall, Suspension |
| Place of application | indoor, outdoor |
| Impact protection | IK08 |
| Housing colour | White |
| Diffuser material | Polystyrene (PS) |
| Minimum distance from the illuminated object | 0.5 m |
| Ultraviolet radiation | no |
| Operating temperature range | -40° +50°C |
| Suitable for installation in normally flammable surfaces | yes |
| Mercury content | Does not contain |
| Ingress protection | IP65 |
| Housing material | Aluminum, Iron alloy |

Signs marking goods

| | |
|--------------------------|-------------------------------------|
| Packaging marking | Recycling of waste, CE, Utilization |
|--------------------------|-------------------------------------|



Dimensions

| | |
|------------|---------------|
| EAN | 4820246487481 |
|------------|---------------|

VIDEX[®]

VIDEX 20W 0.6M 5000K 3200Lm White

INDEX: VL-BNWL04-20065

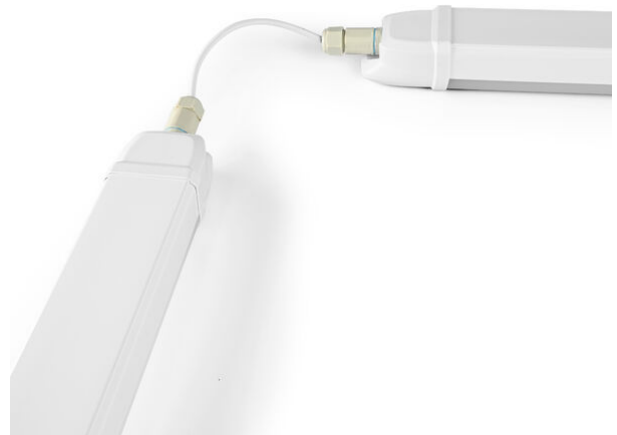
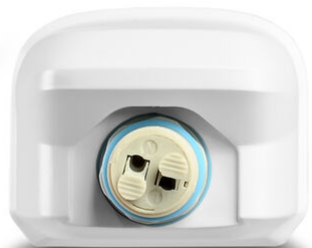
VIDEX[®]

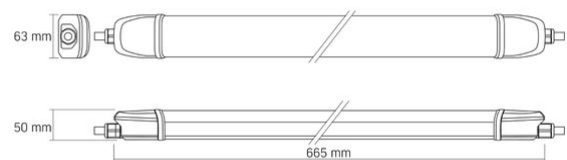
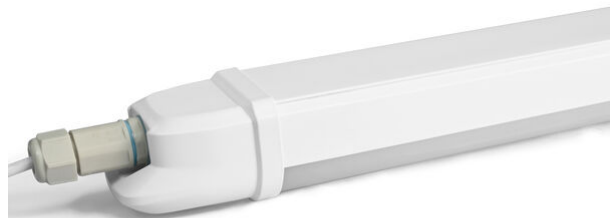
VIDEX 20W 0.6M 5000K 3200Lm White

INDEX: VL-BNWL04-20065

VIDEX[®]

VIDEX 20W 0.6M 5000K 3200Lm White

INDEX: VL-BNWL04-20065

VIDEX[®]**VIDEX 20W 0.6M 5000K 3200Lm White****INDEX: VL-BNWL04-20065**

We reserve the right to make technical changes. The data contained in this material is not legally binding.

Allegro opt Sp. z o.o., ul. Mierzeja Wiślana 11,
30-732 Krakow, Poland.

INDEX: VL-BNWL04-20065

-  The product must be used indoors
-  The product must be used outdoors
-  Class of protection against electric shock II - provided not only by basic insulation but also by double or reinforced insulation
-  Minimum distance from the illuminated object
0,5 m
-  The product can be installed and used in/on normally flammable surfaces
-  Waste recycling after the end of the product's service life
-  The product meets the requirements of EU directives
-  It is forbidden to throw away waste equipment marked with the symbol of a crossed-out bin with other waste
-  — Ra > 80 - color rendering index
-  — Rated On/off cycles
20 000
-  — The product withstands strong impacts (e.g., from a heavy object)
-  — Nominal lifetime (hours)
30 000 h
-  — The product does not emit ultraviolet light
Free
-  — The product is incompatible with light regulators
Not Dimmable
-  — The flickering of the light does not exceed the permissible level
No Flicker
-  — The product has minimal flickering, which should not cause discomfort or danger
No Flicker
-  — Colour consistency in MacAdam ellipses (SDCM)
CCT 5000K
-  — The product does not contain mercury
Free
-  — Class of protection against dust and moisture.
The product has full protection against dust and water jets from all directions
IP65