

TECHNICAL CARD



LED Light Emergency Power Supply



Pursuant to the provisions of the WEEE Act, it is forbidden to put waste equipment marked with the symbol of a crossed out bin together with other waste. The user, wishing to get rid of electronic and electrical equipment, is obliged to return it to a waste equipment collection point. There are no hazardous components in the equipment that have a particularly negative impact on the environment and human health.



Free



Free



IP20

WARRANTY 2 YEARS

Type of light source

Directional (DLS) or non-directional (NDLS) light source	-
Connected light source (cls)	-
Mains (MLS) or non-mains (NMLS) light source	-
Technology	LED

Electrical parameters

On-mode power (Pon)	3-50 W
Rated voltage, frequency	AC 220-240 V, 50/60 Hz
Rated current	200 mA
Electric shock protection class	II
Standby Power (Psb)	0.2 W

Additional information

Place of application	indoor
Housing colour	White
Ultraviolet radiation	no
Operating temperature range	0° +45°C
Battery type	Li-ion 18650
Battery capacity	2200 mAh (2pcs)

VIDEX VL-EMM-L23

INDEX: VL-EMM-L23

Battery replaceable	yes
Suitable for installation in normally flammable surfaces	yes
Mercury content	Does not contain
Ingress protection	IP20
Housing material	PC

Dimensions

EAN	4820246487887
In the package	1 pc.
Height	164 mm
Outer box	100 pcs.
Width	45 mm
Depth	22 mm
Unit nett weight	165g

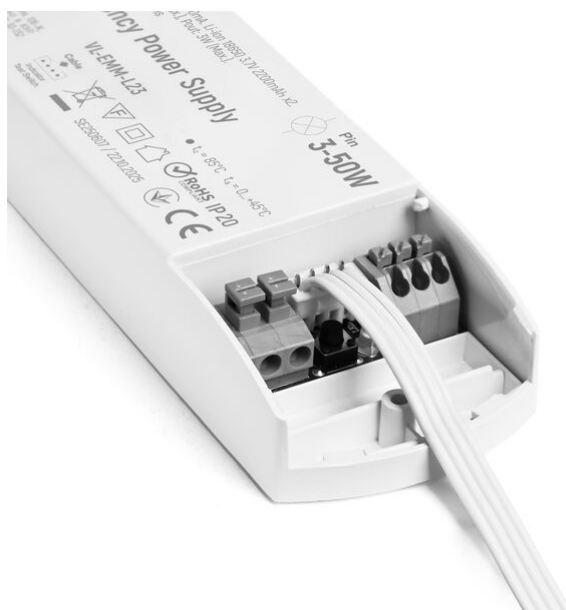
Signs marking goods

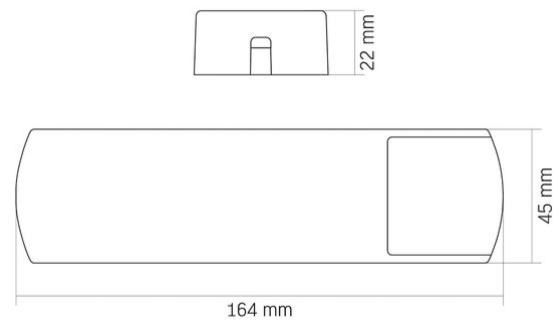
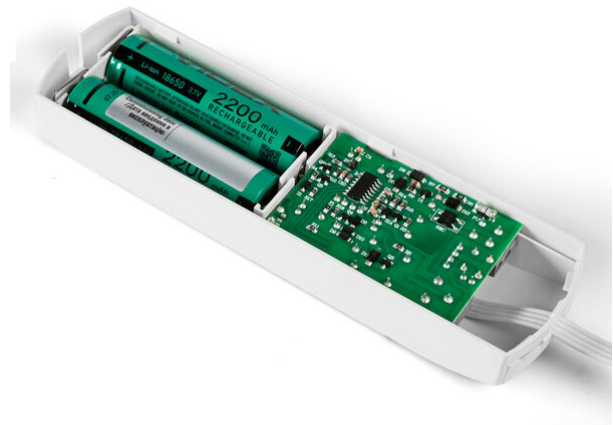
Packaging marking	Recycling of waste, CE, Utilization
-------------------	-------------------------------------

VIDEX®

VIDEX VL-EMM-L23

INDEX: VL-EMM-L23



VIDEX[®]**VIDEX VL-EMM-L23****INDEX: VL-EMM-L23**

We reserve the right to make technical changes. The data contained in this material is not legally binding.

Allegro opt Sp. z o.o., ul. Mierzeja Wiślana 11,
30-732 Krakow, Poland.

INDEX: VL-EMM-L23

-  The product must be used indoors
-  Class of protection against electric shock II - provided not only by basic insulation but also by double or reinforced insulation
-  The product can be installed and used in/on normally flammable surfaces
-  Waste recycling after the end of the product's service life
-  The product meets the requirements of EU directives
-  It is forbidden to throw away waste equipment marked with the symbol of a crossed-out bin with other waste
-  — The product does not emit ultraviolet light
-  — The product does not contain mercury
-  — Class of protection against dust and moisture. Protection against solid objects larger than 12 mm; no protection against moisture