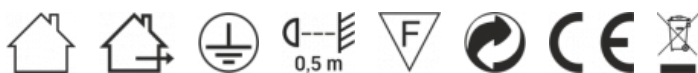


VIDEX®**VIDEX HB01 100W 5000K 18000Lm 220V Black****INDEX: VL-HB01-1005B**

TECHNICAL CARD



LED High Bay Light

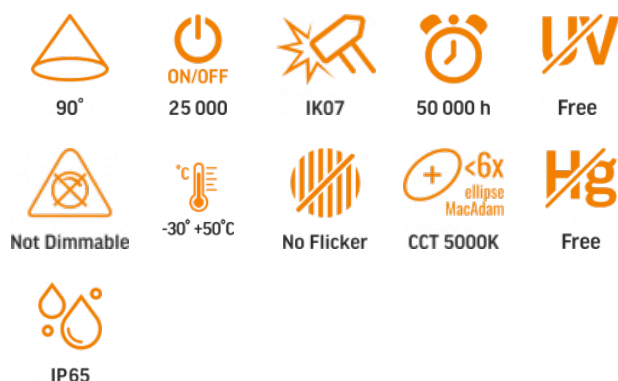


Pursuant to the provisions of the WEEE Act, it is forbidden to put waste equipment marked with the symbol of a crossed out bin together with other waste. The user, wishing to get rid of electronic and electrical equipment, is obliged to return it to a waste equipment collection point. There are no hazardous components in the equipment that have a particularly negative impact on the environment and human health.

VIDEX®

VIDEX HB01 100W 5000K 18000Lm 220V Black

INDEX: VL-HB01-1005B



WARRANTY 3 YEARS



Neutral White / Neutralny biały / Neutralni bila / Blanc neuter / Neutrálna biela / Neutraal wit / Semleges feher / Nevtralno bela / Neutrálno bijela / Neutralweiß / Alb neutru / Neutrus balta / Neitrāls balta / Neutraalne valge / Нейтрално бяла / Bianco neutro.

General parameters

Light source or containing product	Light source
Control gear replaceable	no
Light source replaceable	no

Type of light source

Energy class of the light source	B
Dimmable	no
Directional (DLS) or non-directional (NDLS) light source	DLS
Connected light source (cls)	no
Color-tunable light source	no
Mains (MLS) or non-mains (NMLS) light source	MLS

High luminance light source	No
Anti-glare shield	No
Technology	LED

Electrical parameters

On-mode power (Pon)	100 W
Rated voltage, frequency	AC 110-277 V, 50/60 Hz
Rated current	500 mA
Input interface	Free wire ends
Electric shock protection class	I
Displacement factor (cos φ1)	0.9
Survival factor	0.9
Energy consumption in on-mode of the light source (kWh/1000h)	100

Photometric parameters

Luminous flux	18000 Lm
Useful luminous flux (Φuse)	16200 Lm
Correlated color temperature	5000K (neutral white)
Beam angle	90°
Color rendering index (CRI)	Ra > 70
On/Off cycles	25000
Lifetime (L70B50)	50000 h
Useful luminous flux of the light source reference	in a wide cone (120°)
Chromaticity coordinates (x)	0.34
Chromaticity coordinates (y)	0.359

INDEX: VL-HB01-1005B

R9 colour rendering index value	>0
The lumen maintenance factor	≥96%
Flicker metric (Pst LM)	≤1
Stroboscopic effect metric (SVM)	outdoor use
Colour consistency in MacAdam ellipses (SDCM)	<6 (5000K)
CRI Min	Ra 80
CRI Max	Ra 88

Additional information

Place of installation	Suspension
Place of application	indoor, outdoor
Impact protection	IK07
Housing colour	Black
Diffuser material	Polycarbonate (PC)
Minimum distance from the illuminated object	0.5 m
Ultraviolet radiation	no
Operating temperature range	-30° +50°C
Suitable for installation in normally flammable surfaces	yes
Mercury content	Does not contain
Ingress protection	IP65
Housing material	Aluminum

Dimensions

EAN	4820246484633
Height	148 mm

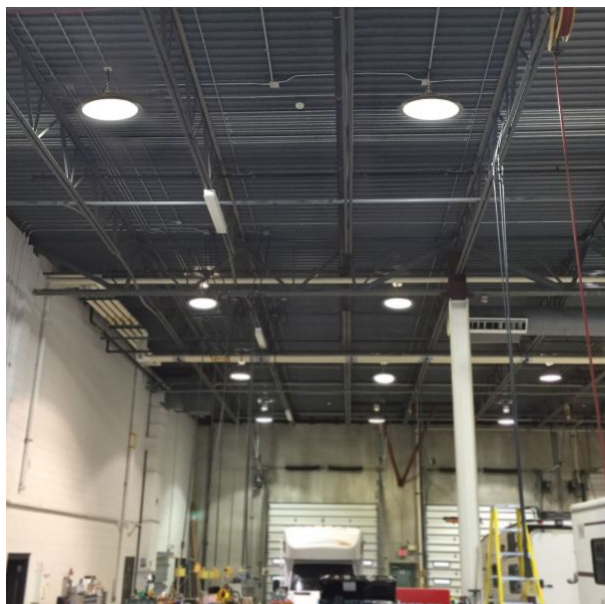
Depth	265 mm
In the package	1 pc.
Outer box	4 pcs.
Width	265 mm
Unit nett weight	1.55kg

Signs marking goods
Packaging marking

Recycling of
waste, CE,
Utilization



VIDEX®**VIDEX HB01 100W 5000K 18000Lm 220V Black****INDEX: VL-HB01-1005B**

INDEX: VL-HB01-1005B


We reserve the right to make technical changes. The data contained in this material is not legally binding.

Allegro opt Sp. z o.o., ul. Mierzeja Wiślana 11,

30-732 Krakow, Poland.



The product must be used indoors



The product must be used outdoors



Protection against electric shock class I. A product in which the means of protection against electric shock, in addition to the main insulation, is an additional protective circuit connected to the grounding of the power supply network



Minimum distance from the illuminated object



The product can be installed and used in/on normally flammable surfaces



Waste recycling after the end of the product's service life



The product meets the requirements of EU directives



It is forbidden to throw away waste equipment marked with the symbol of a crossed-out bin with other waste



— Rated beam angle



— Rated On/off cycles



— The product withstands a medium impact (e.g., from a blunt object)



— Nominal lifetime (hours)



— The product does not emit ultraviolet light



— The product is incompatible with light regulators



— Operating temperatures range



— The flickering of the light does not exceed the permissible level



— Colour consistency in MacAdam ellipses (SDCM)



— The product does not contain mercury



Class of protection against dust and moisture. The product has full protection against dust and water jets from all directions