

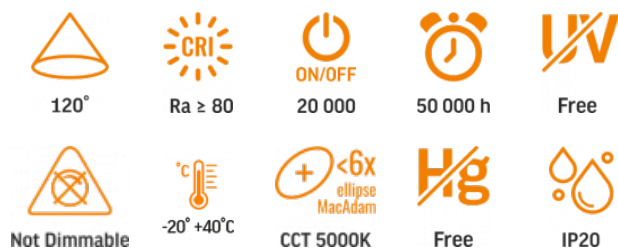
TECHNICAL CARD



LED Frame Panel



Pursuant to the provisions of the WEEE Act, it is forbidden to put waste equipment marked with the symbol of a crossed out bin together with other waste. The user, wishing to get rid of electronic and electrical equipment, is obliged to return it to a waste equipment collection point. There are no hazardous components in the equipment that have a particularly negative impact on the environment and human health.

INDEX: VLE-PAU405W

WARRANTY 3 YEARS


Neutral White / Neutralny biały / Neutralni bila / Blanc neuter / Neutrálna biela / Neutraal wit / Semleges feher / Nevtralno bela / Neutrálno bijela / Neutralweiß / Alb neutru / Neutrus balta / Neitrāls balta / Neutraalne valge / Нейтрально бяла / Bianco neutro.

General parameters

Light source or containing product	Containing product
Control gear replaceable	yes
Light source replaceable	no

Type of light source

Dimmable	no
Directional (DLS) or non-directional (NDLS) light source	NDLS
Connected light source (cls)	no
Color-tunable light source	no
Mains (MLS) or non-mains (NMLS) light source	NMLS
High luminance light source	No
Anti-glare shield	No
Technology	LED

Energy efficiency class of the contained light source D

Electrical parameters

Rated voltage, frequency	AC 220-240 V, 50/60 Hz
Cable length	75 cm
Rated current	193 mA
Input interface	Free wire ends
Electric shock protection class	II
Displacement factor (cos φ1)	-
Survival factor	0.9
Energy consumption in on-mode of the light source (kWh/1000h)	40

Photometric parameters

Useful luminous flux of the contained light source (Φuse)	5100 Lm
Correlated color temperature	5000K (neutral white)
Beam angle	120°
Color rendering index (CRI)	Ra > 80
On/Off cycles	20000
Lifetime (L70B50)	50000 h
Useful luminous flux of the light source reference	in a sphere (360°)
Chromaticity coordinates (x)	0.35
Chromaticity coordinates (y)	0.36
R9 colour rendering index value	13
The lumen maintenance factor	≥96%

INDEX: VLE-PAU405W

Flicker metric (Pst LM)	-
Stroboscopic effect metric (SVM)	-
Colour consistency in MacAdam ellipses (SDCM)	<6 (5000K)
CRI Min	Ra 80
CRI Max	Ra 88

Additional information

Place of installation	Armstrong ceiling, Ceiling
Place of application	indoor
Housing colour	White
Diffuser material	Plastic
Ultraviolet radiation	no
Operating temperature range	-20° +40°C
Suitable for installation in normally flammable surfaces	yes
Mercury content	Does not contain
Ingress protection	IP20
Housing material	PC

Dimensions

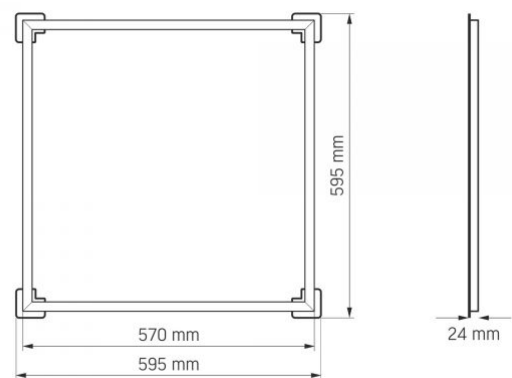
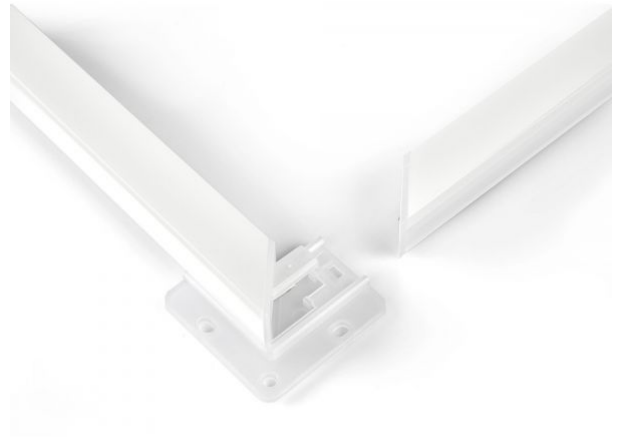
EAN	5904405542385
Height	595 mm
Depth	24 mm
In the package	1 pc.
Outer box	20 pcs.
Width	595 mm

Unit nett weight 850g

Signs marking goods
Packaging marking

Recycling of waste, CE, Utilization



VIDEX®**VIDEX-FRAME-PANEL-LED-40W-PAU405W-NW5****INDEX: VLE-PAU405W**

INDEX: VLE-PAU405W


We reserve the right to make technical changes. The data contained in this material is not legally binding.

Allegro opt Sp. z o.o., ul. Mierzeja Wiślana 11,
30-732 Krakow, Poland.



The product must be used indoors



Class of protection against electric shock II - provided not only by basic insulation but also by double or reinforced insulation



The product can be installed and used in/on normally flammable surfaces



Waste recycling after the end of the product's service life



The product meets the requirements of EU directives



It is forbidden to throw away waste equipment marked with the symbol of a crossed-out bin with other waste



120°

Rated beam angle



Ra ≥ 80

Ra > 80 - color rendering index



20 000

Rated On/off cycles



50 000 h

Nominal lifetime (hours)



Free

The product does not emit ultraviolet light



Not Dimmable

The product is incompatible with light regulators



-20° ~ +40°C

Operating temperatures range



CCT 5000K

Colour consistency in MacAdam ellipses (SDCM)



Free

The product does not contain mercury



IP20

Class of protection against dust and moisture. Protection against solid objects larger than 12 mm; no protection against moisture