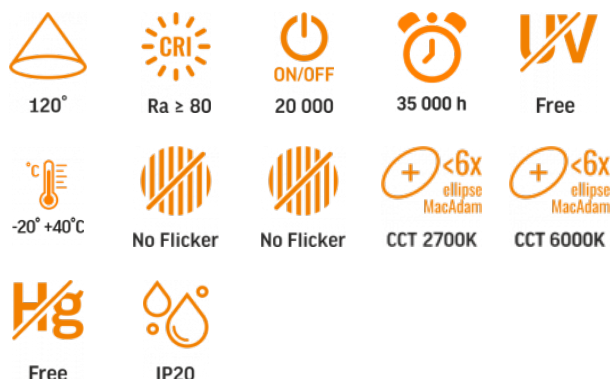


TECHNICAL CARD



LED DIMMABLE PENDANT LUMINAIRE WITH
REMOTE CONTROL

INDEX: VLE-ERC-RGB-72B

WARRANTY 3 YEARS
General parameters

Light source or containing product	Containing product
Control gear replaceable	by the producer
Light source replaceable	by the producer

Type of light source

Dimmable	remote controller
Directional (DLS) or non-directional (NDLS) light source	NDLS
Connected light source (cls)	no
Color-tunable light source	yes
Mains (MLS) or non-mains (NMLS) light source	MLS
High luminance light source	No
Anti-glare shield	No
Technology	LED

Energy efficiency class of the contained light source **F**

Electrical parameters

On-mode power (Pon)	72 W
Rated voltage, frequency	AC 175-265 V, 50/60 Hz
Rated current	350 mA
Input interface	Free wire ends
Electric shock protection class	I
Displacement factor (cos φ1)	0.9
Survival factor	1
Standby Power (Psb)	0.4 W

Photometric parameters

Useful luminous flux of the contained light source (Φuse)	7500 Lm
Correlated color temperature	6000K (cold white), 2700K (warm white)
Beam angle	120°
Color rendering index (CRI)	Ra > 80
On/Off cycles	20000
Lifetime (L70B50)	35000 h
Useful luminous flux of the light source reference	in a sphere (360°)
Chromaticity coordinates (x)	0.384
Chromaticity coordinates (y)	0.378
R9 colour rendering index value	>0

INDEX: VLE-ERC-RGB-72B

The lumen maintenance factor	≥96%
Flicker metric (Pst LM)	≤1
Stroboscopic effect metric (SVM)	≤0.4
Colour consistency in MacAdam ellipses (SDCM)	<6 (2700K), <6 (6000K)
CRI Min	Ra 80
CRI Max	Ra 88

Additional information

Place of installation	Ceiling, Wall
Place of application	indoor
Housing colour	Black
Diffuser material	Polycarbonate (PC)
Minimum distance from the illuminated object	0.5 m
Ultraviolet radiation	no
Operating temperature range	-20° +40°C
Suitable for installation in normally flammable surfaces	yes
Mercury content	Does not contain
Ingress protection	IP20
Housing material	Aluminum alloy

Dimensions

EAN	5904405542231
Height	80 mm
Depth	450 mm
In the package	1 pc.

Outer box	5 pcs.
Width	450 mm
Unit nett weight	1.65kg

Signs marking goods
Packaging marking

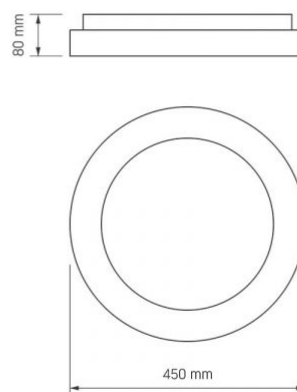
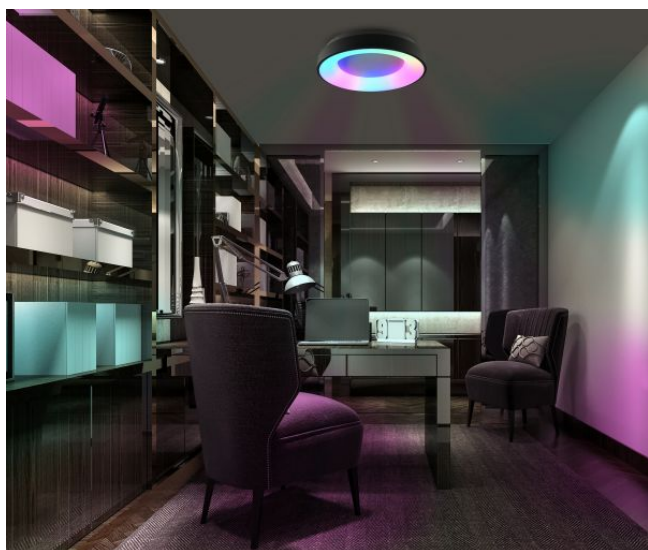
Recycling of
waste, CE,
Utilization



VIDEX®

VIDEX-LED-EDGE-RC-RGB-72W-BLACK

INDEX: VLE-ERC-RGB-72B



We reserve the right to make technical changes. The data contained in this material is not legally binding.

Allegro opt Sp. z o.o., ul. Mierzeja Wiślana 11,
30-732 Krakow, Poland.

INDEX: VLE-ERC-RGB-72B


The product must be used indoors



Protection against electric shock class I. A product in which the means of protection against electric shock, in addition to the main insulation, is an additional protective circuit connected to the grounding of the power supply network



Minimum distance from the illuminated object



The product can be installed and used in/on normally flammable surfaces



Waste recycling after the end of the product's service life



The product meets the requirements of EU directives



It is forbidden to throw away waste equipment marked with the symbol of a crossed-out bin with other waste



— Rated beam angle



— Ra > 80 - color rendering index



— Rated On/off cycles



— Nominal lifetime (hours)



— The product does not emit ultraviolet light



— Operating temperatures range



— The flickering of the light does not exceed the permissible level



— The product has minimal flickering, which should not cause discomfort or danger



— Colour consistency in MacAdam ellipses (SDCM)



— Colour consistency in MacAdam ellipses (SDCM)



— The product does not contain mercury



— Class of protection against dust and moisture. Protection against solid objects larger than 12 mm; no protection against moisture