

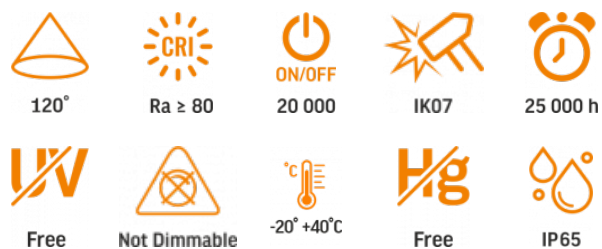
TECHNICAL CARD



LED Bulkhead Light



Pursuant to the provisions of the WEEE Act, it is forbidden to put waste equipment marked with the symbol of a crossed out bin together with other waste. The user, wishing to get rid of electronic and electrical equipment, is obliged to return it to a waste equipment collection point. There are no hazardous components in the equipment that have a particularly negative impact on the environment and human health.



WARRANTY 2 YEARS

NEUTRAL WHITE



Neutral White / Neutralny biały / Neutralni bila / Blanc neuter / Neutrálna biela / Neutraal wit / Semleges feher / Nevtralno bela / Neutrálno bijela / Neutralweiß / Alb neutru / Neutrus balta / Neitrāls balta / Neutraalne valge / Нейтрално бяла / Bianco neutro.

General parameters

Light source or containing product	Containing product
Light source replaceable	by the producer

Type of light source

Dimmable	no
Technology	LED
Energy efficiency class of the contained light source	F

Electrical parameters

On-mode power (Pon)	18 W
Rated voltage, frequency	AC 220-240 V, 50/60 Hz
Rated current	156 mA

VIDEX-BULKHEAD-LED-INGA-18W-NW

INDEX: VLE-BH12R-185

Input interface	Terminal block
Electric shock protection class	II

Photometric parameters

Useful luminous flux of the contained light source (Φuse)	1900 Lm
Correlated color temperature	5000K (neutral white)
Beam angle	120°
Color rendering index (CRI)	Ra > 80
On/Off cycles	20000
Lifetime (L70B50)	25000 h
Useful luminous flux of the light source reference	in a sphere (360°)
CRI Min	Ra 80
CRI Max	Ra 88

Additional information

Place of installation	Ceiling, Flat surface, Wall
Place of application	indoor, outdoor
Impact protection	IK07
Housing colour	Gray
Diffuser material	Polycarbonate (PC)
Minimum distance from the illuminated object	0.5 m
Ultraviolet radiation	no
Operating temperature range	-20° +40°C
Mercury content	Does not contain

VIDEX®

VIDEX-BULKHEAD-LED-INGA-18W-NW

INDEX: VLE-BH12R-185

Ingress protection	IP65
--------------------	------

Housing material	Plastic
------------------	---------

Dimensions

EAN	5904405540961
-----	---------------

Height	220 mm
--------	--------

Depth	65 mm
-------	-------

In the package	1 pc.
----------------	-------

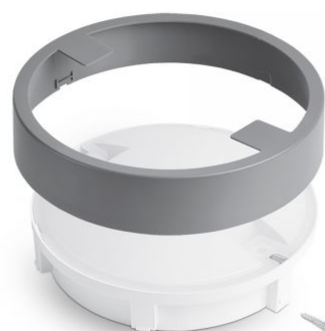
Outer box	16 pcs.
-----------	---------

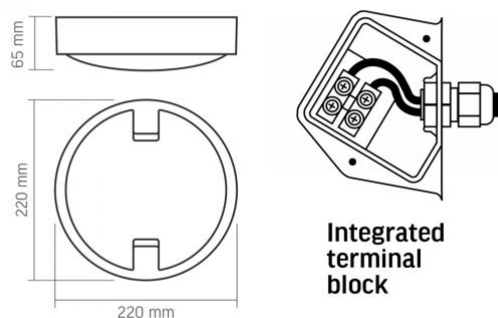
Width	220 mm
-------	--------

Signs marking goods

Packaging marking

Recycling of
waste, CE,
Utilization



INDEX: VLE-BH12R-185


We reserve the right to make technical changes. The data contained in this material is not legally binding.

Allegro opt Sp. z o.o., ul. Mierzeja Wiślana 11,
30-732 Krakow, Poland.



The product must be used indoors



The product must be used outdoors



Class of protection against electric shock II - provided not only by basic insulation but also by double or reinforced insulation



0,5 m

Minimum distance from the illuminated object



Waste recycling after the end of the product's service life



The product meets the requirements of EU directives



It is forbidden to throw away waste equipment marked with the symbol of a crossed-out bin with other waste



120°

Rated beam angle



Ra > 80

Ra > 80 - color rendering index



ON/OFF

20 000

Rated On/off cycles



IK07

The product withstands a medium impact (e.g., from a blunt object)



25 000 h

Nominal lifetime (hours)



Free

The product does not emit ultraviolet light



Not Dimmable

The product is incompatible with light regulators



-20° ~ +40°C

Operating temperatures range



Free

The product does not contain mercury



IP65

Class of protection against dust and moisture. The product has full protection against dust and water jets from all directions