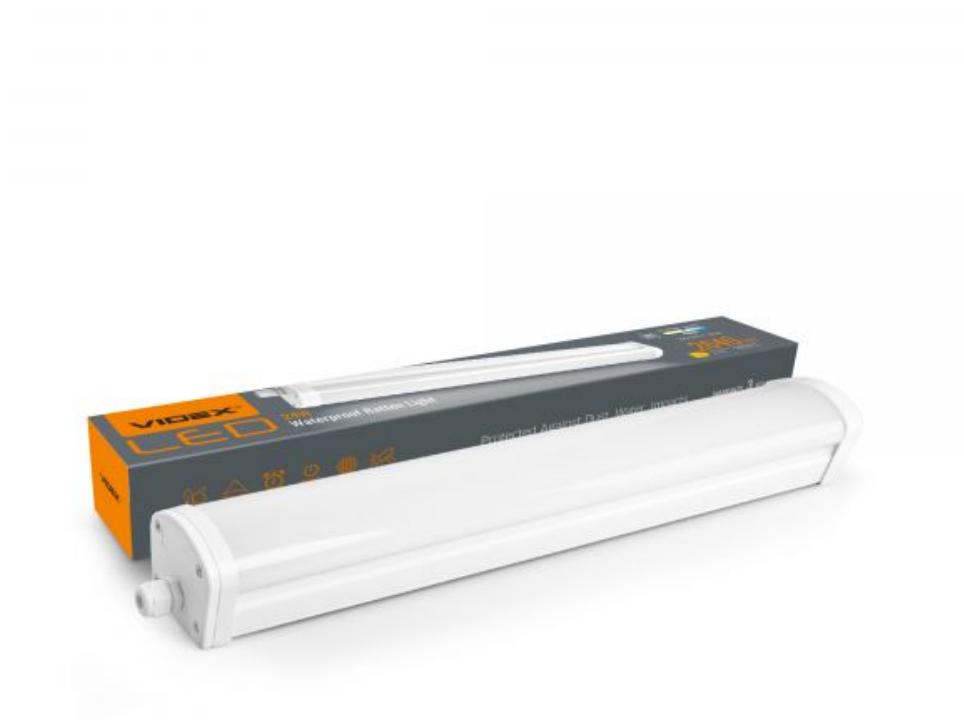


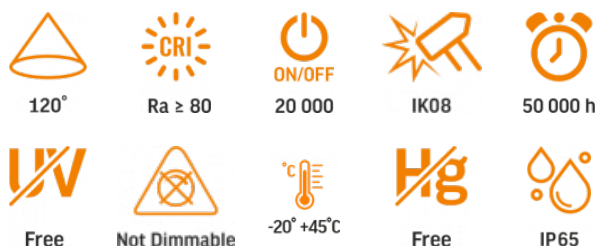
TECHNICAL CARD



LED Batten Light



Pursuant to the provisions of the WEEE Act, it is forbidden to put waste equipment marked with the symbol of a crossed out bin together with other waste. The user, wishing to get rid of electronic and electrical equipment, is obliged to return it to a waste equipment collection point. There are no hazardous components in the equipment that have a particularly negative impact on the environment and human health.

INDEX: VLE-BNW-24064

WARRANTY 3 YEARS
NEUTRAL WHITE


Neutral White / Neutralny biały / Neutralni bila / Blanc neuter / Neutrálna biela / Neutraal wit / Semleges feher / Nevtralno bela / Neutrálno bijela / Neutralweiß / Alb neutru / Neutralus balta / Neitrāls balta / Neutraalne valge / Нейтрально бяла / Bianco neutro.

General parameters

| | |
|---|--------------------|
| Light source or containing product | Containing product |
| Control gear replaceable | no |
| Light source replaceable | by the producer |

Type of light source

| | |
|--|-----|
| Dimmable | no |
| Technology | LED |
| Energy efficiency class of the contained light source | E |

Electrical parameters

| | |
|---------------------------------|------------------------|
| On-mode power (Pon) | 24 W |
| Rated voltage, frequency | AC 220-240 V, 50/60 Hz |

| | |
|--|----------------|
| Rated current | 110 mA |
| Input interface | Terminal block |
| Electric shock protection class | I |

Photometric parameters

| | |
|--|-----------------------|
| Useful luminous flux of the contained light source (Φuse) | 2933 Lm |
| Correlated color temperature | 4000K (neutral white) |
| Beam angle | 120° |
| Color rendering index (CRI) | Ra > 80 |
| On/Off cycles | 20000 |
| Lifetime (L70B50) | 50000 h |
| Useful luminous flux of the light source reference | in a sphere (360°) |
| CRI Min | Ra 80 |
| CRI Max | Ra 88 |

Additional information

| | |
|---|-----------------------------|
| Place of installation | Ceiling, Flat surface, Wall |
| Place of application | indoor, outdoor |
| Impact protection | IK08 |
| Housing colour | White |
| Diffuser material | Polycarbonate (PC) |
| Minimum distance from the illuminated object | 0.5 m |
| Ultraviolet radiation | no |
| Operating temperature range | -20° +45°C |

| | |
|---------------------------|------------------|
| Mercury content | Does not contain |
| Ingress protection | IP65 |
| Housing material | PC |

Dimensions

| | |
|-----------------------|---------------|
| EAN | 5904405541418 |
| Height | 600 mm |
| Depth | 74 mm |
| In the package | 1 pc. |
| Outer box | 12 pcs. |
| Width | 87 mm |

Signs marking goods

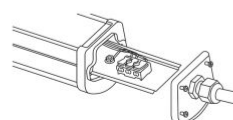
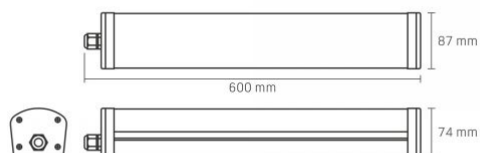
| | |
|--------------------------|-------------------------------------|
| Packaging marking | Recycling of waste, CE, Utilization |
|--------------------------|-------------------------------------|



VIDEX®

VIDEX-HERMES-60CM-24W-IP65-NW

INDEX: VLE-BNW-24064



Built-in terminal
block for convenient
and reliable
connection

We reserve the right to make technical changes. The data contained in this material is not legally binding.

Allegro opt Sp. z o.o., ul. Mierzeja Wiślana 11,
30-732 Krakow, Poland.



The product must be used indoors



The product must be used outdoors



Protection against electric shock class I. A product in which the means of protection against electric shock, in addition to the main insulation, is an additional protective circuit connected to the grounding of the power supply network



0,5 m

Minimum distance from the illuminated object



Waste recycling after the end of the product's service life



The product meets the requirements of EU directives



It is forbidden to throw away waste equipment marked with the symbol of a crossed-out bin with other waste



120°

Rated beam angle



Ra ≥ 80

Ra > 80 - color rendering index



20 000

Rated On/off cycles



IK08

The product withstands strong impacts (e.g., from a heavy object)



50 000 h

Nominal lifetime (hours)



Free

The product does not emit ultraviolet light



Not Dimmable

The product is incompatible with light regulators



-20° +45°C

Operating temperatures range



Free

The product does not contain mercury



IP65

Class of protection against dust and moisture.
The product has full protection against dust and water jets from all directions