

## TECHNICAL CARD



Spot track luminaire



# VIDEX®



IK07



-20° +40°C



Free



IP20

## WARRANTY 2 YEARS

The body of the lamp is made of aluminum - a light and durable metal that is not subject to corrosion. The surface of the case is covered with matte paint with a sandy texture, resistant to small scratches. Depending on the type of lamps used, this lamp can be used both for general lighting of rooms and for accent lighting of individual zones in the interior.

### General parameters

<b>Light source replaceable</b>	end user
---------------------------------	----------

### Electrical parameters

<b>Rated voltage, frequency</b>	AC 220-240 V, 50/60 Hz
---------------------------------	------------------------

<b>Input interface</b>	2 Wires Busbar
------------------------	-------------------

<b>Electric shock protection class</b>	I
--	---

### Additional information

<b>Place of installation</b>	Busbar track
------------------------------	--------------

<b>Place of application</b>	indoor
-----------------------------	--------

<b>Impact protection</b>	IK07
--------------------------	------

<b>Housing colour</b>	White
-----------------------	-------

<b>Operating temperature range</b>	-20° +40°C
------------------------------------	------------

<b>Mercury content</b>	Does not contain
------------------------	------------------

## VIDEX-GU10-SKOT-WHITE

### INDEX: VL-SPF05C-W

<b>Ingress protection</b>	IP20
---------------------------	------

<b>Housing material</b>	Aluminum
-------------------------	----------

### Dimensions

<b>EAN</b>	4820246482172
------------	---------------

<b>Height</b>	100 mm
---------------	--------

<b>Depth</b>	55 mm
--------------	-------

<b>Width</b>	55 mm
--------------	-------

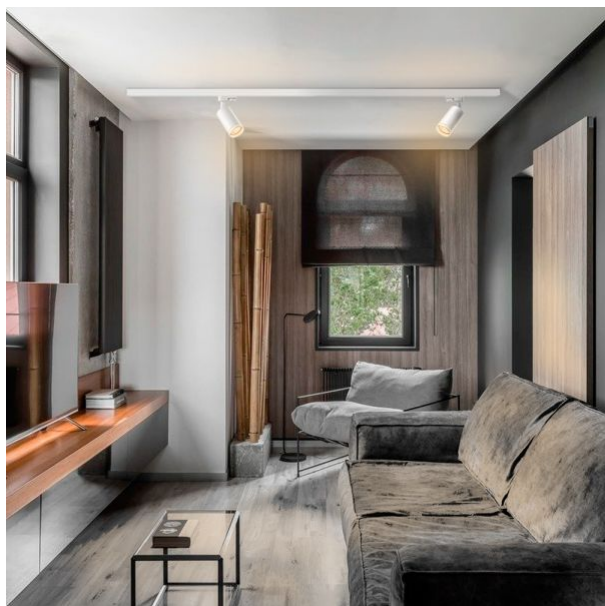
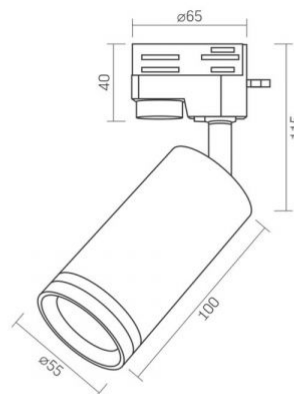
<b>Outer box</b>	20 pcs.
------------------	---------



# VIDEX®

## VIDEX-GU10-SKOT-WHITE

### INDEX: VL-SPF05C-W



We reserve the right to make technical changes. The data contained in this material is not legally binding.

Allegro opt Sp. z o.o., ul. Mierzeja Wiślana 11,  
30-732 Krakow, Poland.



The product must be used indoors



Protection against electric shock class I. A product in which the means of protection against electric shock, in addition to the main insulation, is an additional protective circuit connected to the grounding of the power supply network



IK07

— The product withstands a medium impact (e.g., from a blunt object)



-20° +40°C

— Operating temperatures range



Free

— The product does not contain mercury



IP20

— Class of protection against dust and moisture. Protection against solid objects larger than 12 mm; no protection against moisture